

FRAMES

FORCED STEERING PARTS

for drawbars KK80 and frames

WALTERSCHEID – YOUR PARTNER ON THE TRACTOR REAR



WALTERSCHEID COUPLING SYSTEMS FOR JOHN DEERE TRACTORS



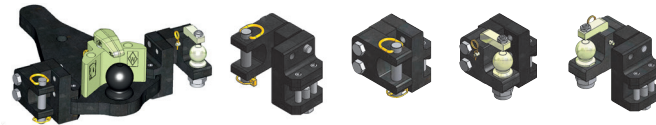
Series 5E

- ▶ **KU341L**
rail size W=329/32/25mm – 9 H
item no. 8002915
- ▶ **KP8341**
ball plate
item no. 8005036
- ▶ **PP5341**
piton plate
item no. 8005038
- ▶ **SE341**
sustainer for universal frame KU341L
item no. 8005060



- ▶ **ZWL-KBA-KU**
item no. 8004771
- ▶ **50-300**
item no. 8002496
- ▶ **50-15-304**
item no. 8004444
- ▶ **50-310**
item no. 8002497
- ▶ **50-15-304W15**
item no. 8004539
- ▶ **50-320**
item no. 8002498
- ▶ **ZWL30KU-AS**
item no. 8004824
- ▶ **for KB8329/KB8389**
- ▶ **ZWL30W15KU-AS**
item no. 8004825
- ▶ **50-15-25**
item no. 8002839

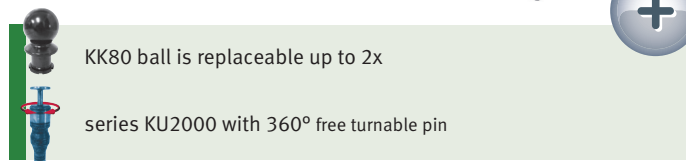
MOUNTING EXAMPLES



ALTERNATIVE TOP PART

for drawbars

- ▶ **DRAWBAR TOP PART ZPA**
CAT2/CAT3/CAT4 models
item no. 8004891/8004892/8004893
MOUNTING EXAMPLE
- ▶ **DRAWBAR ADAPTER KUA**
for flange couplings
item no. 8004895
MOUNTING EXAMPLES
- ▶ **KBAZWL**
ball coupling top part ZWL
item no. 8004715



KK80 ball is replaceable up to 2x

series KU2000 with 360° free turnable pin

Hydraulic toplinks with original Walterscheid hook, lower link hooks operated from the driver's seat, hydraulic lateral stabilizers for a safe and comfortable work in difficult terrain – only a few milestones in the world of coupling technology developed by Walterscheid within the last 30 years.

The integration of the former Walterscheid Cramer GmbH is another highlight and a big step forward on our track to bringing more convenience and safety into agricultural business. A wide range of coupling ladders including different inserts made Walterscheid into a full service provider for high quality coupling systems for tractors and self-propelled equipments. Focussing on safe and convenient coupling systems makes us an ideal partner for OEMs and farmers.

Walterscheid – we take agriculture forwards!

Off-Highway Powertrain Services
Germany GmbH

Niederlassung Dingelstädt - Fachbereich Anhängertechnik
Heiligenstädter Straße 17a
D-37351 Dingelstädt

Tel: +49 36075 573-0
Fax: +49 36075 573-23

hitches@walterscheid.com
www.walterscheid.com

For more information and technical details please call our hotline or download the latest version of the couplings catalogue on www.walterscheid.com

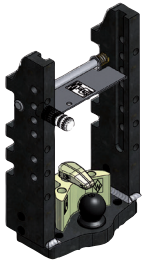
WALTERSCHEID GMBH
Hauptstraße 150
D-53797 Lohmar
Tel: +49 2246 12-0
Fax: +49 2246 12-3501
www.walterscheid.com



TCR 00.268 0712.XX GB X.X ©Printed in Germany



SERIES
4755-4955
5E
6000/7000
7R/7200R-7280R
8000/8R
9020-9620



FRAMES

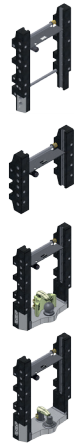
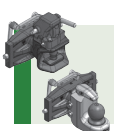
Series 6000/7000/7R/8000/8R

- ▶ **KU344L**
rail size W=329/32/25mm – 9 H
item no. 8004545
- ▶ **KU344K**
rail size W=329/32/25mm – 5 H
item no. 8004516
- ▶ **KU344F**
rail size W=329/32/25mm – 5 H
item no. 8004547
- ▶ **KU344KK**
rail size W=329/32/25mm – 6 H
item no. 8002740
- ▶ **KU344W**
rail size W=389/32/25mm – 8 H
item no. 8005033
- ▶ **KP8389**
ball plate
item no. 8005037

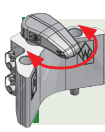


Series 7R/7200R – 7280R

- ▶ **KU346L**
rail size W=390/32/25mm – 9 H
item no. 8005204
- ▶ **KU346K**
rail size W=390/32/25mm – 6 H
item no. 8005206
- ▶ **KU346KK**
rail size W=390/32/25mm – 6 H
item no. 8005205
- ▶ **KU346F**
rail size W=390/32/25mm – 6 H
item no. 8005203

Walterscheid couplings are made for heavy duty work and mostly in use of forged parts



forged tool-free downholder for compensation of high negative charges
360° free turnable for free sight
forged catch device with centering function



ADJUSTABLE MODELS

| reference | rail size (mm) | item no. |
|-----------------|----------------|----------|
| KU2000/329NBFBF | 329/32/25 | 8004342 |
| KU2000/389XB | 389/32/25 | 8005155 |



37mm spherical

| | | |
|------------|-----------|---------|
| KU5410/329 | 329/32/25 | 8003699 |
| KU5410/389 | 389/32/25 | 8005153 |



33mm cylindrical

| | | |
|---------------|-----------|---------|
| KU2000/329NA5 | 329/32/25 | 8004283 |
| KU2000/389XA5 | 389/32/25 | 8005156 |



32mm cylindrical

| | | |
|--------|-----------|---------|
| KB8329 | 329/32/25 | 8002579 |
| KB8389 | 389/32/25 | 8004858 |



| | | |
|--------|-----------|---------|
| KI8329 | 329/32/25 | 8002589 |
|--------|-----------|---------|



| | | |
|---------|-----------|---------|
| PB5329N | 329/32/25 | 8003248 |
| PB5389N | 389/32/25 | 8005143 |



| | | |
|-----------|-----------|---------|
| ZP4344-45 | 329/32/25 | 8004808 |
| ZP4344-90 | 389/32/25 | 8005035 |



DRAWBARS WITH BALL

Series 7000/7R

- ▶ **KBA8344**
straight
item no. 8003678
- ▶ **KBA83440B**
cranked
item no. 8004897
- ▶ **KBA83440BW0**
cranked with alternative top part 0°
item no. 8004710
- ▶ **KBA83440BW15**
cranked with alternative top part 15°
item no. 8004711



Series 8000/8R

- ▶ **KBA8345**
straight
item no. 8004871
- ▶ **KBA83450B**
cranked
item no. 8003680
- ▶ **KBA83450BW0**
cranked with alternative top part 0°
item no. 8004599
- ▶ **KBA83450BW15**
cranked with alternative top part 15°
item no. 8004600



- ▶ **9020-9620**
- ▶ **KBA88460B**
straight
item no. 8004807



- ▶ **4755-4955**
- ▶ **KBA8329JD**
cranked
item no. 8003677



- ▶ **KBA8329JDG**
straight, 2 positions
item no. 8004992




newest flexing-technology and modular design for flexible part design



DRAWBARS WITH PITON

Series 7000/7R

- ▶ **PBA5344**
straight
item no. 8005159
- ▶ **PBA53440B**
cranked
item no. 8005160
- ▶ **PBA5344A**
cranked with alternative top part
item no. 8004974



Series 8000/8R

- ▶ **PBA5345**
straight
item no. 8005162
- ▶ **PBA53450B**
cranked
item no. 8005163
- ▶ **PBA5345A**
cranked with alternative top part
item no. 8005161

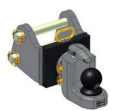


MORE MODELS

- ▶ **KU2000/829JDC**
automatic 37mm
item no. 8004330



- ▶ **KI8829JDC**
KK80 ball coupling
item no. 8004671



- ▶ **KU2000/829JD**
automatic 37mm
item no. 8004197



- ▶ **KI8829JD**
KK80 ball coupling
item no. 8004670

