

FORCED STEERING PARTS

for drawbars KK80 and frames

▶ **ZWL-KBA-KU**
item no. 8004771



▶ **50-300**
item no. 8002496



▶ **50-15-304**
item no. 8004444



▶ **50-310**
item no. 8002497



▶ **50-15-304W15**
item no. 8004539



▶ **50-320**
item no. 8002498



▶ **ZWL30KU-AS**
item no. 8004824



▶ **ZWL30W15KU-AS**
item no. 8004825



FORCED STEERING PARTS

for KB8309/KB8322/KB8335

▶ **50-15**
item no. 8002213



MOUNTING EXAMPLES



KK80 ball is replaceable up to 2x

series KU2000 with 360° free turnable pin



WALTERSCHEID – YOUR PARTNER ON THE TRACTOR REAR

Hydraulic toplinks with original Walterscheid hook, lower link hooks operated from the driver's seat, hydraulic lateral stabilizers for a safe and comfortable work in difficult terrain – only a few milestones in the world of coupling technology developed by Walterscheid within the last 30 years.

The integration of the former Walterscheid Cramer GmbH is another highlight and a big step forward on our track to bringing more convenience and safety into agricultural business. A wide range of coupling ladders including different inserts made Walterscheid into a full service provider for high quality coupling systems for tractors and self-propelled equipment. Focussing on safe and convenient coupling systems makes us an ideal partner for OEMs and farmers.

Walterscheid – we take agriculture forwards!

Off-Highway Powertrain Services GmbH

Heiligenstädter Straße 17a
D-37351 Dingelstädt
phone: +49 36075 573-0
fax: +49 36075 573-23

hitches@walterscheid.com
www.walterscheid.com

For more information and technical details please call our hotline or download the latest version of the couplings catalogue on www.walterscheid.com

Walterscheid GmbH

Hauptstraße 150
D-53797 Lohmar
phone: +49 22 46 12-0
fax: +49 22 46 12-35 01

www.walterscheid.com

WALTERSCHEID

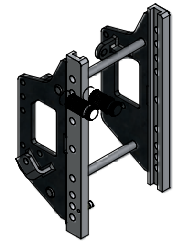
WALTERSCHEID
POWERTRAIN GROUP

WALTERSCHEID

WALTERSCHEID COUPLING SYSTEMS FOR LANDINI TRACTORS

Landini®

SERIES
5830-10800
Legend 105-180
Mythos 90-115
Powerfarm 60-105
Powerful 230-280
Rex 60-105



We reserve the right to change without prior consultation. Use products only for the specified applications. We only guarantee constant quality. Reproduction, even in part, is only authorised with the written consent of Walterscheid GmbH.

TCR 017GB 0112.XX.XX ©Printed in Germany

FRAMES

Series Legend 105-180

▶ **KU300**
rail size W=335/30/22 mm – 7 H
item no. 8002446

▶ **KU300KK**
rail size W=335/30/22 mm – 6 H
item no. 8004718



Series Powerful 230-280

▶ **KU301ALX**
rail size W=322/30/22 mm – 8 H
item no. 8002733

▶ **KU301XKK**
rail size W=322/30/22 mm – 5 H
item no. 8002735



Series Mythos 90-115

▶ **KU351**
rail size W=309/30/22 mm – 7 H
item no. 8002449



Series Rex 60-105/Powerfarm 60-105

▶ **KU352**
rail size W=309/30/22 mm – 6 H
item no. 8002450



newest flexing-technology and modular design
for flexible part design



ADJUSTABLE MODELS

reference	rail size (mm)	item no.
KU2000/309NB	309/30/22	8004187
KU2000/322XB	322/30/22	8005104
KU2000/335NB	335/30/22	8004182



37mm spherical

KU5410/309	309/30/22	8003697
KU5410/322	322/30/22	8003698
KU5410/335	335/30/22	8003700



31mm cylindrical

KU2000/309NA5	309/30/22	8004185
KU2000/322NA5	322/30/22	8004189
KU2000/335NA5	335/30/22	8004284



32mm cylindrical

KB8309	309/30/22	8002576
KB8322	322/30/22	8002578
KB8335	335/30/22	8002580



KI8309	309/30/22	8002585
KI8322	322/30/22	8002588
KI8335	335/30/22	8002590



PB5309N	309/30/22	8003245
PB5322N	322/30/22	8003247
PB5335N	335/30/22	8003249



Series Powerful 230-280

▶ **KBA8301ALX**
straight
item no. 8003679



MORE MODELS

Series Rex 60-105

▶ **KU876/94008**
automatic 38mm
item no. 8004032

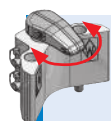


Series 5830-10800

▶ **KU835**
manual pin
item no. 8002465



Walterscheid couplings are made for
heavy duty work and mostly in use of forged parts



forged tool-free downholder for compensation
of high negative charges
360° free turnable for free sight
forged catch device with centering function

