

**MONTAGE- UND BETRIEBSANLEITUNG
INSTALLATION AND OPERATING INSTRUCTIONS
INSTRUCTIONS DE MONTAGE ET D'UTILISATION**

21.04.2021

KUGELKUPPLUNG KI (KUGEL-INNENTEIL) 8300

BALL COUPLING KI 8300

BOULE D'ATTELAGE KI 8300

WICHTIGE HINWEISE:

siehe separates Dokument BA_TASC_400002, www.walterscheid.com/downloads/

IMPORTATANT NOTES:

see separate document BA_TASC_400002, www.walterscheid.com/downloads/

NOTES IMPORTANTES:

voir document séparé BA_TASC_400002, www.walterscheid.com/downloads/

BALL COUPLING KI 8300

DESCRIPTION:

The ball coupling dimensions and field of application complying with ISO 24347, regulation VO (EU) 2015/208 and regulation UN ECE R147, class a80.

In its normal state, the device is in coupled and locked position.

Only for connection with coupling heads 80 (ball-type trailer shank) according to ISO 24347 or UN ECE R147, class b80.

The KI 8300 ball-coupling can only be used in towing frames with quick-adjust height adjustment.

OPERATING RANGE:

For use on agricultural or forestry vehicles, self-propelled work machines or trailers.

TYPE APPROVALS AND CHARACTERISTIC VALUES:

1. APPROVAL UN/ECE R147:

Classification of mechanical coupling device: a80

CHARACTERISTIC VALUES:

- > Adm. D-value: 93,0 kN
- > Adm. Dc-value: 93,0 kN
- > Adm. V-value: 51,8 kN
- > Adm. vertical load: 2000 daN (kg)
- > Max. speed: 60 km/h

R147-approval mark



147R-00 0019D

2. EU- TYPE APPROVAL:

Connecting device according to VO(EU)2015/208: ball coupling

CHARACTERISTIC VALUES:

- > Adm. D-Value: 97,1 kN
- > Adm. vertical load: 2000 daN (kg)

Type approval mark:



00154 ND

3. GERMAN NATIONAL APPROVAL NO.: M 9740

4. EC-TYPE APPROVAL NO.: e1*2009/144*2013/8*0334

CHARACTERISTIC VALUES:

- > Adm. D-Value: 92,0 kN
- > Adm. vertical load: 2000 daN (kg)

as well as

5. EC-TYPE APPROVAL NO.: e1*89/173*2006/96*0410

CHARACTERISTIC VALUES:

- > Adm. D-Value: 84,3 kN
- > Adm. vertical load: 2000 daN (kg)



NOTE:

If the valid national approval regulations of the respective country of use require additional official approvals for using these parameters, such approvals must be applied for.

For use of the coupling above the PTO, attention should be paid to the vehicle manufacturer's data regarding vertical loads.



IMPORTANT:

Attention must be paid to the D value and the maximum vertical load of the towing frame in this context. The lower value applies in each case.

VERSIONS AND DIMENSIONS:

(See Figure 1)

The ball coupling can be supplied in various dimensions according to the table below.

Type/ Versions	Approval No.	Total width Dim. A	Guide width Dim. B	Pin-Ø- Dim. C	Guide spac- ing in hitch frame	Guide width in hitch frame	Hole -Ø in hitch frame
	a. m.	[mm]	[mm]	[mm]	[mm]	[mm]	[mm]
KI 8309N	1,2,3,4	309	29,7	22	310	30	23
KI 8311N	5	311	29,7	22	312	30	23
KI 8314N	5	314	30,0	20	315	31	21
KI 8322N	1,2,3,4	322	29,7	22	323	30	23
KI 8329N	1,2,3,4	329	31,7	25	330	32	26
KI 8329/30	1,2,3,4	329	29,7	20	330	30	21
KI 8329/33	1,2,3,4	329	33,6	23	330	34	24
KI 8335N	1,2,3,4	335	29,7	22	336	30	23
KI 8389N	1,2,3,4	389	31,7	25	390	32	26
KI 8389/30	1,2,3,4	389	29,7	20	390	30	21



IMPORTANT:

To avoid injury, protective gloves, safety glasses and safety shoes must be worn during all dismantling/ assembly actions described in this chapter.

Environment:

Lubricants can enter the environment. Environmental pollution: Collect, store and correctly dispose of lubricants in suitable containers.

2. INSTALLATION:

(See Figure 2)



NOTE:

The pertinent regulations (e.g. Accident Prevention Regulations for Vehicles) and the attachment guidelines of the vehicle manufacturers must be observed when installing the coupling!

The attachment of the coupling to the vehicle must be carried out in accordance with the requirements of regulation (EU) 2015/208, Appendix 34.



NOTE:

Official national regulations must be observed. For example: in Germany the obligations §13 FZV regarding the data in the car license concerning the permissible trailer weight as well as the permissible vertical load must be considered.

ATTACHMENT OF THE BALL COUPLING INTO THE TOWING FRAME:

See attachment or separate document BA_TASC_400027, www.walterscheid.com/downloads/



WARNING:

The pertinent safety regulations must be observed when coupling and uncoupling. No one may stand between the vehicles. The coupling may only be operated in locked condition.

3. DESCRIPTION, OPERATION AND MAINTENANCE:

See attachment or separate document BA_TASC_400028, www.walterscheid.com/downloads/



WARNING:

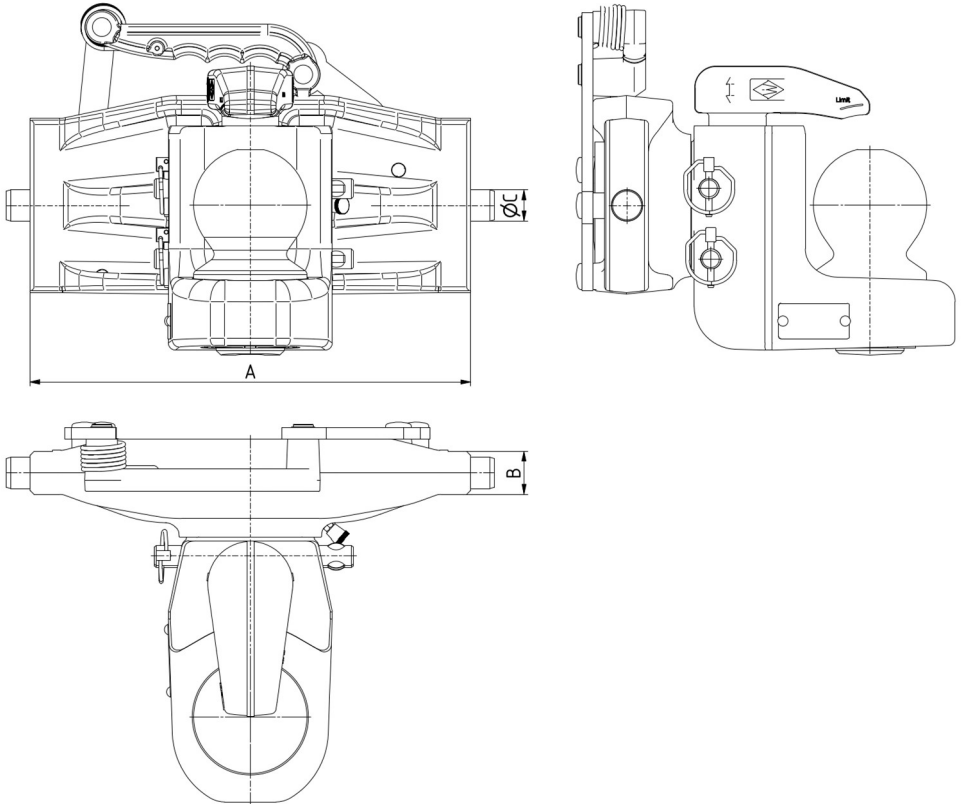
SAFETY NOTES:

- > The user is obliged to always operate the coupling in perfect condition and to forbid its use by unauthorised persons.
- > The loads indicated on the type plate may not be exceeded.
- > Unauthorised conversion or modification of the coupling is not permitted.

4. CALCULATION OF CHARACTERISTIC VALUES FOR CORRECT OPERATION OF THE COUPLING ON AGRICULTURAL AND FORESTRY VEHICLES

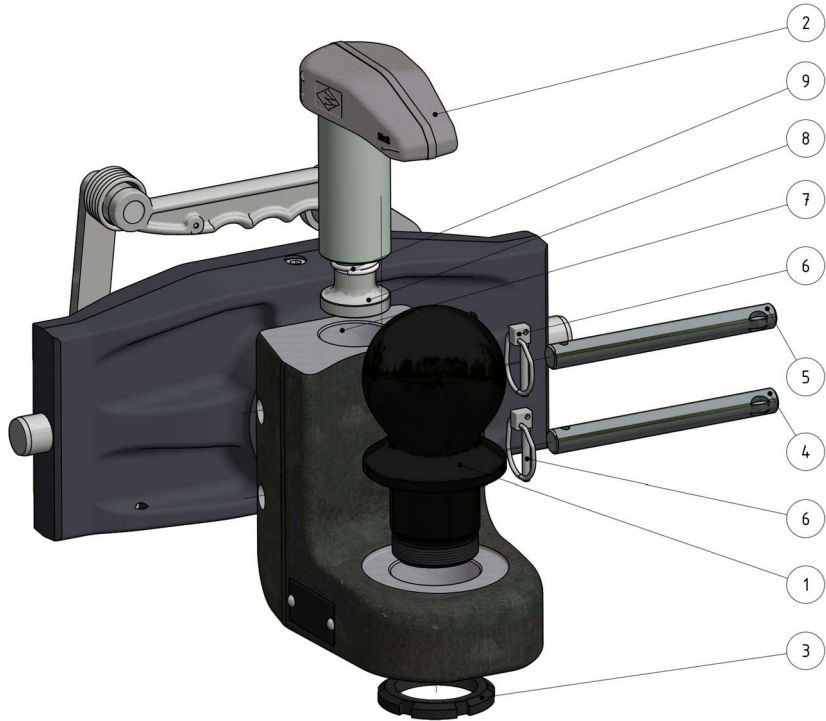
See attachment or separate document BA_TASC_400029, www.walterscheid.com/downloads

BILD 1
FIGURE 1



Abmessungen
Dimensions

BILD 2
FIGURE 2



Legende:

- 1... Kugel 80
- 2... Niederhalter
- 3... Nutmutter
- 4... Niederhalterbolzen unten
- 5... Niederhalterbolzen oben
- 6... Klapstecker
- 7... Lagerung
- 8... Stellschraube
- 9... Niederhalter-Feder

Legend:

- 1....ball 80
- 2....retainer
- 3....grouded nut
- 4....locking pin bottom
- 5....locking pin top
- 6....linch pin
- 7....bearing
- 8....set screw
- 9....retainer spring

Légende:

- 1....boule 80
- 2....Dispositif de retenue
- 3....Écrou rainuré
- 4....Goupille de retenue dessus
- 5....Goupille de retenue dessous
- 6....goupille
- 7....logement
- 8....vis de réglage
- 9....ressorts de retenue