

**MONTAGE- UND BETRIEBSANLEITUNG
INSTALLATION AND OPERATING INSTRUCTIONS
INSTRUCTIONS DE MONTAGE ET D'UTILISATION**

16.08.2021

AUTOMATISCHE ANHÄNGEKUPPLUNG KU(IN) 2000

AUTOMATIC TRAILER COUPLING KU(IN) 2000

ATTELAGE DE REMORQUE AUTOMATIQUE KU(IN) 2000

WICHTIGE HINWEISE:

siehe separates Dokument BA_TASC_400002, www.walterscheid.com/downloads/

IMPORTATANT NOTES:

see separate document BA_TASC_400002, www.walterscheid.com/downloads/

NOTES IMPORTANTES:

voir document séparé BA_TASC_400002, www.walterscheid.com/downloads/

AUTOMATIC TRAILER COUPLING KU(IN) 2000

1. TECHNICAL DATA AND DESIGNATIONS:

DESCRIPTION:

(see figure 1)

The coupling is an automatic trailer coupling, its clevis dimensions and field of application complying with DIN 11028 as well RREG 2009/144/EC, VO (EU) 2015/208 and regulation UN ECE R147, class c40.

Its design incorporates the lever trigger system, i.e. the coupling procedure is triggered by moving a trailer ring into the clevis and pressing back the trigger lever. In its normal state, the coupling is in closed and locked position.

The automatic trailer coupling can be pivoted through 360°, the torque required for this purpose being 100 - 150 Nm.

The automatic trailer coupling is only offered installed in a height-adjustable slider and can only be operated in quickly height-adjustable towing frames.

OPERATING RANGE:

For use on agricultural or forestry vehicles, self-propelled work machines or trailers.

TYPE APPROVALS AND CHARACTERISTIC VALUES:

A. APPROVAL UN/ECE R147:

Classification of mechanical coupling device: c40

CHARACTERISTIC VALUES:

- > Adm. D-value: 100,0 kN
- > Adm. Dc-value: 100,0 kN
- > Adm. V-value: 53,9 kN
- > Adm. vertical load: 2000 daN (kg)
- > Max. speed: 60 km/h

R147-approval sign



147R-00 0008D

1. EU-TYPE APPROVAL:

Mechanical coupling type according to VO(EU)2015/208: automatic trailer coupling

CHARACTERISTIC VALUES:

- > Adm. D-value: 105,0 kN
- > Adm. vertical load: 2000 daN (kg)

EU-Type approval sign:



00152 ND

2. GERMAN APPROVAL NO.:

F 4265

CHARACTERISTIC VALUES:

- > Adm. D-value: 94,1 kN
 - > Adm. vertical load: 2000 daN (kg)
- Alternatively, the following applies to the versions NB:
- > Adm. D-value: 120,5 kN
 - > Adm. vertical load: 2000 daN (kg)
 - > max. speed: 40 km/h

3. EC APPROVAL NO.:

e1*2009/144*0088

CHARACTERISTIC VALUES:

- > Adm. D-value: 105,0 kN
- > Adm. vertical load: 2000 daN (kg)
- 4. **EC APPROVAL NO.:** e1*89/173*2006/26*0409
CHARACTERISTIC VALUES:
 - > Adm. D-value: 88,5 kN
 - > Adm. vertical load: 2000 daN (kg)
- 5. **EC APPROVAL NO.:** e1*2009/144*0518
CHARACTERISTIC VALUES:
 - > Adm. D-value: 65,6 kN
 - > Adm. vertical load: 2000 daN (kg)

EXTENSION LENGTH

(see figure 3)

- > Extension length from the center of guide rail in the towing frame (corresponds to the locking hole) to the coupling point: max. 127 mm



NOTE:

If the valid national approval regulations of the respective country of use require additional official approvals for using these parameters, such approvals must be applied for. For use of the coupling above the PTO, attention should be paid to the vehicle manufacturer's data regarding vertical loads.



IMPORTANT:

Attention must be paid to the D value and the maximum vertical load of the towing frame in this context. The lower value applies in each case.

SLIDERS

(see figure 2)

The trailer coupling will be mounted in height adjustable sliders with different total slider widths:

Approval	Width Dim. A	Guide Dim. B	Pin-Ø- Dim. C	Guide spacing in towing frame	Guide width in towing frame	Hole -Ø in tow- ing frame
s. o.	[mm]	[mm]	[mm]	[mm]	[mm]	[mm]
5	293	29,7	22	294	30	23
A,1,2,3	309	29,7	22	310	30	23
4	311	29,7	22	312	30	23
4	314	30,0	20	315	31	21
A,1,2,3	322	29,7	22	323	30	23
A,1,2,3	329	31,7	25	330	32	26
A,1,2,3	329	29,7	20	330	30	21
A,1,2,3	329	33,6	23	330	34	24
A,1,2,3	335	29,7	22	336	30	23
A,1,2,3	389	31,7	25	390	32	26
A,1,2,3	389	29,7	20	390	30	21

Table 1

VERSIONS (= ORDER DESIGNATION):

The couplings are available in three versions: NA, NA5 and NB:

NA = coupling pin diameter 32 mm, NB = coupling pin diameter 37 mm, 5 = coupling point suitable for special applications.

Designations are always expressed as: IN2000/xxxYYY, with xxx representing the total width and YYY the version.

The slider width 329 can also be supplied with guidance width of 29,7 or 33.6 mm and the slider with a width 389 can also be supplied with guidance width of 29,7 mm. In this case the digits „/30“ respectively „/33“ will be added behind the total width of the designation.

Examples:

IN2000/335NA5

IN2000 = automatic coupling of the IN2000 series

335 = total width of the slider

NA = \varnothing 32 mm coupling pin

5 = suitable for 50 mm trailer rings

or IN2000/329/33NB

IN2000 = automatic coupling of the IN2000 series

329/33 = total width of the slider and slider width 33,6 mm

NB = \varnothing 37 mm coupling pin

TRAILER RINGS:

All versions are suitable for connection to trailer rings according to ISO 5692-1, ISO 8755 and ISO 5692-2.



IMPORTANT:

To avoid injury, protective gloves, safety glasses and safety shoes must be worn during all dismantling/ assembly actions described in this chapter.

Environment:

Lubricants can enter the environment. Environmental pollution: Collect, store and correctly dispose of lubricants in suitable containers.

2. INSTALLATION:



NOTE:

The pertinent regulations (e.g. Accident Prevention Regulations for Vehicles) and the attachment guidelines of the vehicle manufacturers must be observed when installing the coupling!

The attachment of the coupling to the vehicle must be carried out in accordance with the requirements of regulation (EU) 2015/208, Appendix 34.



NOTE:

Official national regulations must be observed. For example: in Germany the obligations §13 FZV regarding the data in the car license concerning the permissible trailer weight as well as the permissible vertical load must be considered.

ATTACHMENT OF THE COUPLING INTO THE TOWING FRAME:

See attachment or separate document BA_TASC_400027, www.walterscheid.com/downloads/



WARNING:

The pertinent safety regulations must be observed when coupling and uncoupling.
No one may stand between the vehicles. The coupling may only be operated in locked condition.

3. DESCRIPTION, OPERATION AND MAINTENANCE:

See attachment or separate document BA_TASC_400030, www.walterscheid.com/downloads/



WARNING:

SAFETY NOTES:

- > The user is obliged to always operate the coupling in perfect condition and to forbid its use by unauthorised persons.
- > The loads indicated on the type plate may not be exceeded.
- > Unauthorised conversion or modification of the coupling is not permitted.

4. CALCULATION OF CHARACTERISTIC VALUES FOR CORRECT OPERATION OF THE COUPLING ON AGRICULTURAL AND FORESTRY VEHICLES

See attachment or separate document BA_TASC_400029, www.walterscheid.com/downloads

BILD 1
FIGURE 1

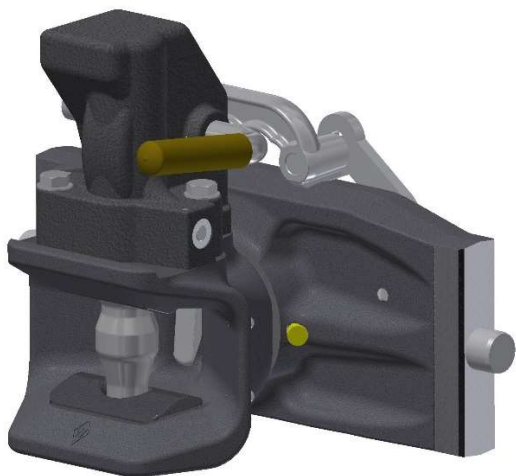
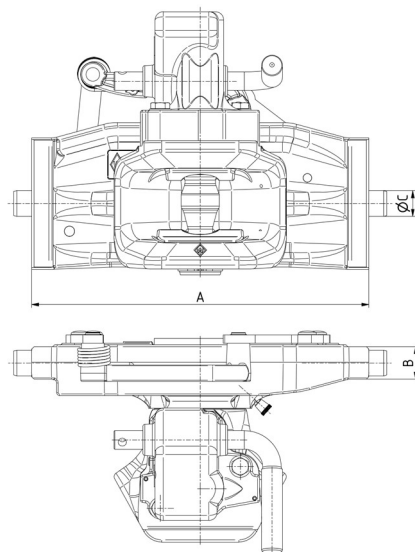


BILD 2
FIGURE 2



Typ / type: IN 2000/329NB

Abmessungen / dimensions

BILD 3
FIGURE 3

