

**MONTAGE- UND BETRIEBSANLEITUNG
INSTALLATION AND OPERATING INSTRUCTIONS
INSTRUCTIONS DE MONTAGE ET D'UTILISATION**

18.03.2022

NICHTSELBSTTÄTIGE FLANSCHKUPPLUNG SERIE KU 514/540

NON-AUTOMATIC FLANGE COUPLING SERIES KU 514/540

ATTELAGE DE REMORQUE NON-AUTOMATIQUE À BRIDE KU 514/540

WICHTIGE HINWEISE:

siehe separates Dokument BA_TASC_400002, www.walterscheid.com/downloads/

IMPORTATANT NOTES:

see separate document BA_TASC_400002, www.walterscheid.com/downloads/

NOTES IMPORTANTES:

voir document séparé BA_TASC_400002, www.walterscheid.com/downloads/

NON-AUTOMATIC FLANGE COUPLING SERIES KU 514/540

1. TECHNICAL DATA AND DESIGNATIONS:

DESCRIPTION:

The coupling is a non-automatic trailer coupling, its clevis dimensions and field of application complying with DIN 11028 as well RREG 2009/144/EC, VO (EU) 2015/208 and regulation UN ECE R147, class c40.

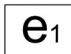
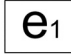
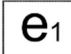
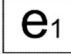
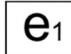
The non-automatic trailer coupling can be pivoted through 360°, the torque required for this purpose being 100 - 150 Nm.

OPERATING RANGE:

For use on agricultural or forestry vehicles, self-propelled work machines or trailers.

TYPE APPROVALS AND CHARACTERISTIC VALUES:

Versions, admissible D value and a static vertical load at the coupling point in accordance with the following table:

Type/ Versions	Admissible D value	Admissible vertical load	type approval sign according to reg. EC 2015/208
	[kN]	[daN]	
KU 514A	45,0	1250	 00179 ND
KU 514B	45,0	1250	 00179 ND
KU 540-4	82,4	2000	 00427ND
KU 540-45	82,4	2000	 00427ND
KU 540-5	92,0	2000	 00426ND



NOTE:

If the valid national approval regulations of the respective country of use require additional official approvals for using these parameters, such approvals must be applied for.

For use of the coupling above the PTO, attention should be paid to the vehicle manufacturer's data regarding vertical loads.

FLANGES KU 514:

(see figure 2)

Version	Hole pattern A x B	Hole dia. C	Fastening screws	Flange dimensions D x E
	[mm]	[mm]		[mm]
A	120x55	15	M 14	155x90
B	106x65	15	M 14	155x90

ORDER DESIGNATION KU 514:

(see figure 1)

Designations are always expressed as: KU 514A(B)xxx, where xxx is representing the type of pin. (ZByyy = Draw pin (4), yyy= length (Available: 190, 270, 335, 485, 682), EHB = One-hand pin (6), NB = Normal pin (3) and STB = Socket pin (5)).

Example: KU514AZB335

KU514A = Flange coupling of the KU514 series with flange A (120x55)

ZB335 = Draw pin 335 length

FLANGES KU 540:

(see figure 2)

Flange size	Hole pattern A x B	Hole dia. C	Fastening screws	Flange dimensions D x E
	[mm]	[mm]		[mm]
4	140x80	17	M 16	180x120
45	140x80	21	M 20	180x120
5	160x100	21	M 20	200x140

The flange sizes corresponding to classes according directive 94/20/EG respectively regulation ECE R 55. Size 45 is a combination of size 4 and 5.

ORDER DESIGNATION KU540:

(see figure 1)

Designations are always expressed as: KU 540-X YYY, where X is flange size, YYY representing the type of pin. (ZByyy = Draw pin(4), yyy= length (Available: 190, 270, 335, 485, 682), EHB = One-hand pin (6), NB = Normal pin (3) and STB = Socket pin (5))

Example: KU540ZB335-4

KU540 = Flange coupling of the KU540 series

ZB335 = Draw pin 335 length

-4 = Type KU540-4 with flange size 4

SPECIAL FEATURE:

The type KU 540STB-4 can be delivered in a special version **KU 540STB-4 MT**. This version is used for wheel loader of the company Manitou and has the designation **288085**.

TRAILER RINGS:

All versions are suitable for connection to trailer rings according to ISO 5692-1, ISO 8755 und ISO 5692-2.

**IMPORTANT:**

To avoid injury, protective gloves, safety glasses and safety shoes must be worn during all dismantling/ assembly actions described in this chapter.

Environment:

Lubricants can enter the environment. Environmental pollution: Collect, store and correctly dispose of lubricants in suitable containers.

2. INSTALLATION:

(See figure 1)

**NOTE:**

The pertinent regulations (e.g. Accident Prevention Regulations for Vehicles) and the attachment guidelines of the vehicle manufacturers must be observed when installing the coupling!

The attachment of the coupling to the vehicle must be carried out in accordance with the requirements of regulation (EU) 2015/208, Appendix 34.

**NOTE:**

Official national regulations must be observed. For example: in Germany the obligations §13 FZV regarding the data in the car license concerning the permissible trailer weight as well as the permissible vertical load must be considered.

ATTACHMENT OF THE COUPLING:

The coupling is attached to the vehicle by means of 4 bolts according to DIN EN 24014, DIN EN 24017 or ISO 4762. A torque wrench must be used to obtain the correct tightening torque. Normally the bolts are not included in the scope of supply. Therefore the data of the vehicle manufacturers are to be preferred for attachment.

If there are no specifications see separate document BA_TASC_400038, www.walterscheid.com/downloads/

**WARNING:**

The pertinent safety regulations must be observed when coupling and uncoupling.

No one may stand between the vehicles. The coupling may only be operated in locked condition.

3. DESCRIPTION, OPERATION AND MAINTENANCE:

See attachment or separate document BA_TASC_400026, www.walterscheid.com/downloads/

**WARNING:****SAFETY NOTES:**

- > The user is obliged to always operate the coupling in perfect condition and to forbid its use by unauthorised persons.
- > The loads indicated on the type plate may not be exceeded.

> Unauthorised conversion or modification of the coupling is not permitted.

4. CALCULATION OF CHARACTERISTIC VALUES FOR CORRECT OPERATION OF THE COUPLING ON AGRICULTURAL AND FORESTRY VEHICLES

See attachment or separate document BA_TASC_400029, www.walterscheid.com/downloads/

BILD 1
FIGURE 1

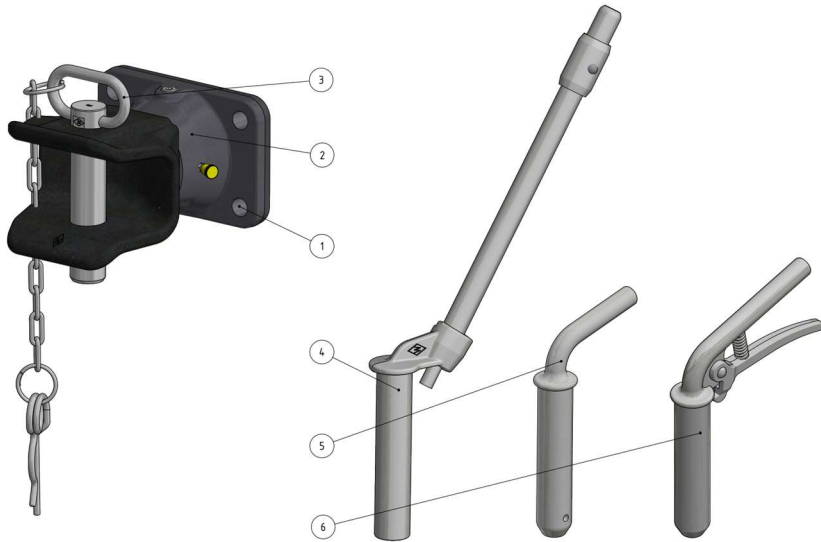
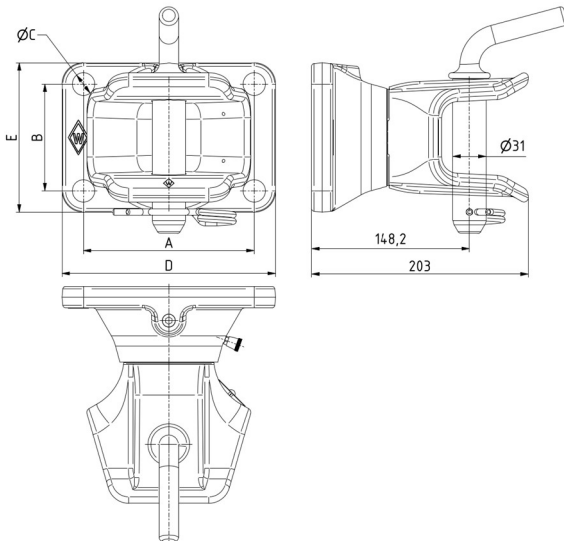


BILD 2
FIGURE 2



Abmessungen / dimensions