

**MONTAGE- UND BETRIEBSANLEITUNG
INSTALLATION AND OPERATING INSTRUCTIONS
INSTRUCTIONS DE MONTAGE ET D'UTILISATION**

18.03.2022

AUTOMATISCHE FLANSCHKUPPLUNG KU 2000-3 /-4 /-5

AUTOMATIC FLANGE COUPLING KU 2000-3 /-4 /-5

ATTELAGE DE REMORQUE AUTOMATIQUE À BRIDE
KU 2000-3/-4/-5

WICHTIGE HINWEISE:

siehe separates Dokument BA_TASC_400002, www.walterscheid.com/downloads/

IMPORTATANT NOTES:

see separate document BA_TASC_400002, www.walterscheid.com/downloads/

NOTES IMPORTANTES:

voir document séparé BA_TASC_400002, www.walterscheid.com/downloads/

AUTOMATIC FLANGE COUPLING KU 2000-3 /-4 /-5

1. TECHNICAL DATA AND DESIGNATIONS:

DESCRIPTION:

The coupling is an automatic trailer coupling, its clevis dimensions and field of application complying with DIN 11028 as well RREG 2009/144/EC, VO (EU) 2015/208 and regulation UN ECE R147, class c40.

Its design incorporates the lever trigger system, i.e. the coupling procedure is triggered by moving a trailer ring into the clevis and pressing back the trigger lever. In its normal state, the coupling is in closed and locked position.

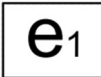
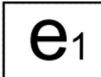
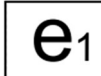
The automatic trailer coupling can be pivoted through 360°, the torque required for this purpose being 100 - 150 Nm.

OPERATING RANGE:

For use on agricultural or forestry vehicles, self-propelled work machines or trailers.

TYPE APPROVALS AND CHARACTERISTIC VALUES:

Versions, admissible D value and a static vertical load at the coupling point in accordance with the following table:

Type/ Versions	Admissible D value	Admissible vertical load and max. speed (v)	German approval No.	approval according to reg. EC 2009/144	type approval sign according to reg. EC 2015/208
	[kN]	[daN] and [km/h]			
KU2000NA-3 KU2000NA5-3 KU2000NB-3 KU2000NA-31 KU2000NA5-31 KU2000NB-31	45,0	1250 at v ≤ 40 respectively 1250 *1)	-	e1*2009/144*0532*01	 00429ND
KU2000NA-4 KU2000NA5-4 KU2000NB-4 KU2000NA-45 KU2000NA5-45 KU2000NB-45	82,4	2000 at v > 40 or 2700 at v ≤ 40 respectively 2000 *1)	M 9619	e1*2009/144*0531*01	 00425ND
KU2000NA-5 KU2000NA5-5	89,2 respectively 100,0 *1)	2000 at v > 40 or 2800 at v ≤ 40 respectively 2500 *1)	M 9619	e1*2009/144*0533*01	 00430ND

KU2000NB-5	92,0 respectively 100,0 *1)	2000 at v > 40 or 2800 at v ≤ 40 respectively 2500 *1)	M 9619	e1*2009/144*0533*01	 00430ND
------------	-----------------------------------	---	--------	---------------------	---

*1) Vertical loads for type approvals according reg. EC 2015/208 are regardless of speed (v)



NOTE:

If the valid national approval regulations of the respective country of use require additional official approvals for using these parameters, such approvals must be applied for. For use of the coupling above the PTO, attention should be paid to the vehicle manufacturer's data regarding vertical loads.

FLANGES:

Flange size	Hole pattern A x B	Hole dia. C	Fastening screws	Flange dimensions D x E
	[mm]	[mm]		[mm]
3	120x55	15	M 14	180x120
31	130x60	19	M 18	180x120
4	140x80	17	M 16	180x120
45	140x80	21	M 20	180x120
5	160x100	21	M 20	200x140

(See figure 2)

The flange sizes corresponding to classes according directive 94/20/EG respectively regulation ECE R 55. Size 45 is a combination of size 4 and 5.

VERSIONS (= ORDER DESIGNATION):

The couplings are available in three versions: NA, NA5 and NB:

NA = coupling pin diameter 32 mm, NB = coupling pin diameter 37 mm

5 = coupling point suitable for special applications.

The versions are always expressed as: KU2000YYY-X, with X representing the flange size and YYY the version.

Examples:

KU2000NA5-4

KU2000 = Automatic coupling of the KU2000 series

NA = 32 mm coupling pin

5 = coupling point suitable for special applications

-4 = Flange size 4

or KU2000NB-31

KU2000 = Automatic coupling of the KU2000 series

NB = 37 mm coupling pin

-31 = Flange size 31

TRAILER RINGS:

All versions are suitable for connection to trailer rings according to ISO 5692-1, ISO 8755 and ISO 5692-2.

**IMPORTANT:**

To avoid injury, protective gloves, safety glasses and safety shoes must be worn during all dismantling/ assembly actions described in this chapter.

Environment:

Lubricants can enter the environment. Environmental pollution: Collect, store and correctly dispose of lubricants in suitable containers.

2. INSTALLATION:

(See figure 1)

**NOTE:**

The pertinent regulations (e.g. Accident Prevention Regulations for Vehicles) and the attachment guidelines of the vehicle manufacturers must be observed when installing the coupling!

The attachment of the coupling to the vehicle must be carried out in accordance with the requirements of regulation (EU) 2015/208, Appendix 34.

**NOTE:**

Official national regulations must be observed. For example: in Germany the obligations §13 FZV regarding the data in the car license concerning the permissible trailer weight as well as the permissible vertical load must be considered.

ATTACHMENT OF THE COUPLING:

The coupling is attached to the vehicle by means of 4 bolts according to DIN EN 24014, DIN EN 24017 or ISO 4762. They are to be tightened crosswise. A torque wrench must be used to obtain the correct tightening torque. Normally the bolts are not included in the scope of supply. Therefore the data of the vehicle manufacturers are to be preferred for attachment.

If there are no specifications see separate document BA_TASC_400038, www.walterscheid.com/downloads/

The flange couplings can also be rotated through 90° for installation, such that the narrow side of the flange points upwards. In this case, the clevis must also be rotated through 90° in such a way that the coupling mechanism points upwards. The adjusting bolt (see separate document BA_TASC_400030) must be released and tightened again for this purpose.

**WARNING:**

The pertinent safety regulations must be observed when coupling and uncoupling.

No one may stand between the vehicles. The coupling may only be operated in locked condition.

3. DESCRIPTION, OPERATION AND MAINTENANCE:

See attachment or separate document BA_TASC_400030, www.walterscheid.com/downloads/



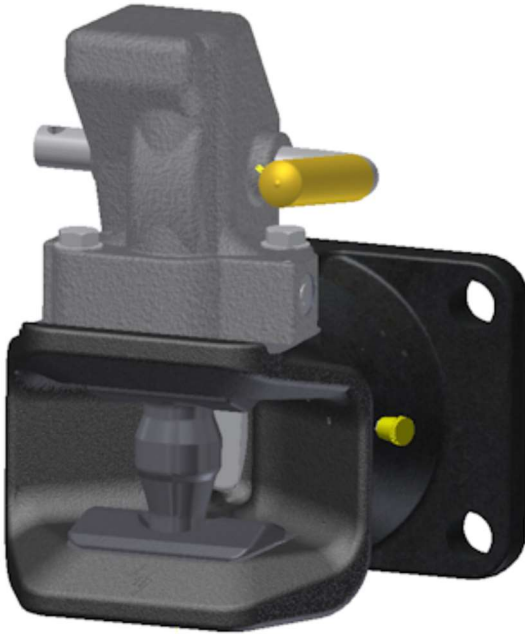
**WARNING:
SAFETY NOTES:**

- > The user is obliged to always operate the coupling in perfect condition and to forbid its use by unauthorised persons.
- > The loads indicated on the type plate may not be exceeded.
- > Unauthorised conversion or modification of the coupling is not permitted.

4. CALCULATION OF CHARACTERISTIC VALUES FOR CORRECT OPERATION OF THE COUPLING ON AGRICULTURAL AND FORESTRY VEHICLES

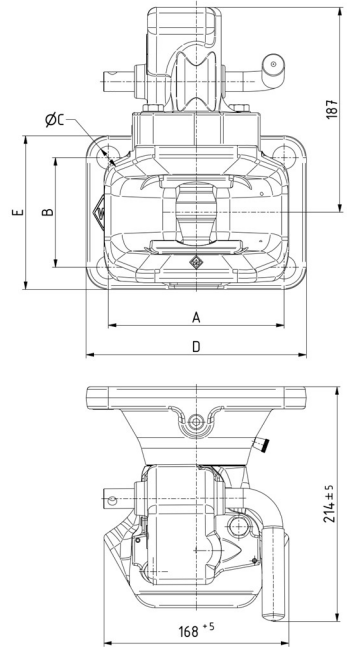
See attachment or separate document BA_TASC_400029, www.walterscheid.com/downloads

BILD 1
FIGURE 1



Typ / type: KU 2000NB-5

BILD 2
FIGURE 2



Abmessungen / dimensions