

**MONTAGE- UND BETRIEBSANLEITUNG  
INSTALLATION AND OPERATING INSTRUCTIONS  
INSTRUCTIONS DE MONTAGE ET D'UTILISATION**

29.04.2022

## ANSCHRAUBPLATTE TYP ANP50

## MOUNTING PLATE TYPE ANP50

## PLAQUE À VISSER TYPE ANP50

### WICHTIGE HINWEISE:

siehe separates Dokument BA\_TASC\_400002, [www.walterscheid.com/downloads/](http://www.walterscheid.com/downloads/)

### IMPORTATANT NOTES:

see separate document BA\_TASC\_400002, [www.walterscheid.com/downloads/](http://www.walterscheid.com/downloads/)

### NOTES IMPORTANTES:

voir document séparé BA\_TASC\_400002, [www.walterscheid.com/downloads/](http://www.walterscheid.com/downloads/)

# MOUNTING PLATE TYPE ANP50

## 1. TECHNICAL DATA AND DESIGNATIONS:

### DESCRIPTION:

The mounting plates type ANP50 are attached to coupling plates type KuP, ABG-No. M 10036 or EC no. e1\*2009/144\*0480 and can be mounted in quick height-adjustable towing frames such as KU 356, EC No. e1\*2009/144\*0560. They are suitable for the attachment of ball couplings with bracket of class A50-X Westfalia type 329076, EG no. E1 00-0101 or Bernhofer, type K-445, UN ECE-Nr. 55R-01 2837. Max. Dimensions of the coupling ball A50-X: see also Figure 6 and 7. The ANP50 mounting plates are also referred to as towing frames in the scope of the StVZO.

### OPERATING RANGE:

For use on agricultural or forestry vehicles.

### EC-TYPE APPROVAL:

#### A. PRIMARY CHARACTERISTIC VALUES:

- > admissible D-Value: 20,0 kN
- > admissible vertical load: 200 daN (kg)

#### B. ALTERNATIVE CHARACTERISTIC VALUES:

- > admissible D-Value: 31,0 kN
- admissible vertical load: 250 daN (kg)

Type approval mark:



0636



### NOTE:

If the valid national approval regulations of the respective country of use require additional official approvals for using these parameters, such approvals must be applied for.

For use of the coupling above the PTO, attention should be paid to the vehicle manufacturer's data regarding vertical loads.

### TYPES / VERSIONS AND DIMENSIONS:

(See Figure 3 - 5)

The ANP50 can be delivered in different mounting dimensions and different hole patterns according to the following table. They are prepared for attachment to coupling plates type KuP or comparable connecting devices, see Fig. 3.

Versions	Char. values	Dwg-No.	Mounting dim.	Hole pattern	hole-Ø	Screw	Hole patterns for ball 50
			[mm]	[mm]	[mm]	[mm]	[mm]
ANP50-3/1-1	A	7003-10	160 x 160	120 x 55	15	M14	90
ANP50-3/2-1	B	7003-30	160 x 210	120 x 55	15	M14	83x56
ANP50-3/2-2	B	7003-20	160 x 260	120 x 55	15	M14	83x56 (2 pos.)
ANP50-4/1-1	A	7004-20	175 x 280	140 x 80	17	M16	90
ANP50-4/1-2	A	7004-10	175 x 180	140 x 80	17	M16	90 (2 pos.)
ANP50-4/2-1	B	7004-25	175 x 220	140 x 80	17	M16	83x56
ANP50-4/2-2	B	7004-23	175 x 280	140 x 80	17	M16	83x56 (2 Pos.)
ANP50-45/1-1	A	7004-22	175 x 280	140 x 80	21	M20	90
ANP50-45/1-2	A	7004-21	175 x 180	140 x 80	21	M20	90 (2 pos.)
ANP50-45/2-1	B	7004-26	175 x 220	140 x 80	21	M20	83x56

ANP50-45/2-2	B	7004-24	175 x 280	140 x 80	21	M20	83x56 (2 Pos.)
--------------	---	---------	-----------	----------	----	-----	----------------

### Overview hole pattern

Flange size		1	2	3	4	45	5
Hole pattern	[mm]	90	83x56	120x55	140x80	140x80	160x100
Holes	[mm]	2 x 17	4 x 10,5	4 x 15	4 x 17	4 x 21	4 x 21
Threads		M16	M10	M14	M16	M20	M20

### VERSIONS (= ORDER DESIGNATION):

The designations result from the type and the standardized hole patterns, first on the tractor side (KuP) and then, separated by "/", the ball couplings 50. Example: ANP50-4 / 1-2, where "4" is the tractor-side hole pattern 140x80 / D17 and "1" corresponds to the ball 50 hole pattern 90 / D17, in 2 rows.



### IMPORTANT:

To avoid injury, protective gloves, safety glasses and safety shoes must be worn during all dismantling/ assembly actions described in this chapter.

### Environment:

Lubricants can enter the environment. Environmental pollution: Collect, store and correctly dispose of lubricants in suitable containers.

## 2. INSTALLATION:



### NOTE:

The pertinent regulations (e.g. Accident Prevention Regulations for Vehicles) and the attachment guidelines of the vehicle manufacturers must be observed when installing the mounting plate!

The attachment of the coupling **plate** to the vehicle must be carried out in accordance with the requirements of regulation (EU) 2015/208, Appendix 34.



### NOTE:

Official national regulations must be observed. For example: in Germany the obligations §13 FZV regarding the data in the car license concerning the permissible trailer weight as well as the permissible vertical load must be considered.

### ATTACHMENT OF THE ANP50 TO THE COUPLING PLATE:

(See Figure 1 and 2)

The ANP 50 is attached to the coupling plate by means of 4 bolts according to DIN EN 24017 or ISO 4762. They are to be tightened crosswise. A torque wrench must be used to obtain the correct tightening torque. Normally the bolts are not included in the scope of supply. Therefore the data of the vehicle manufacturers are to be preferred for attachment. With missing data the following tightening torques \*) are to be considered:

- > For hole diameter 15, use M14x35 – 10.9 bolts or longer, tightening torque 215 Nm \*).
- > For hole diameter 17, use M16x40 – 10.9 bolts or longer, tightening torque 335 Nm \*).
- > For hole diameter 21, use M20x45 – 10.9 bolts or longer, tightening torque 660 Nm \*).

With other kinds of bolts or qualities contact us or your specialist dealer.

\*) values are valid for a total coefficient of friction of  $\mu = 0.14$  (corresponds to non-lubricated slightly oiled and phosphatized surface quality).

The specified lengths are minimum screw lengths. When using additional washers, the screw length may have to be adjusted.

#### **ATTACHMENT OF THE BALL 50 TO THE ANP50:**

see installation and operating instructions for ball 50 (third-party manufacturer).



#### **IMPORTANT:**

If the vehicle owner does not have the appropriate skilled workers and the necessary technical equipment, the installation may only be performed by a specialist workshop.

### **3. OPERATING AND MAINTENANCE:**



#### **WARNING:**

The pertinent safety regulations must be observed when coupling and uncoupling.  
No one may stand between the vehicles.

When coupling and uncoupling, the drawbar must be as horizontal as possible. See also the installation and operating instructions for the ball 50.



#### **WARNING:**

#### **SAFETY NOTES:**

- > The user is obliged to always operate the mounting plate in perfect condition and to forbid its use by unauthorised persons.
- > The loads indicated on the type plate may not be exceeded.
- > Unauthorised conversion or modification of the coupling is not permitted.

### **4. CALCULATION OF CHARACTERISTIC VALUES FOR CORRECT OPERATION OF THE ANP 50 ON AGRICULTURAL AND FORESTRY VEHICLES**

See attachment or separate document BA\_TASC\_400029, [www.walterscheid.com/downloads](http://www.walterscheid.com/downloads)

BILD 1 / FIGURE 1



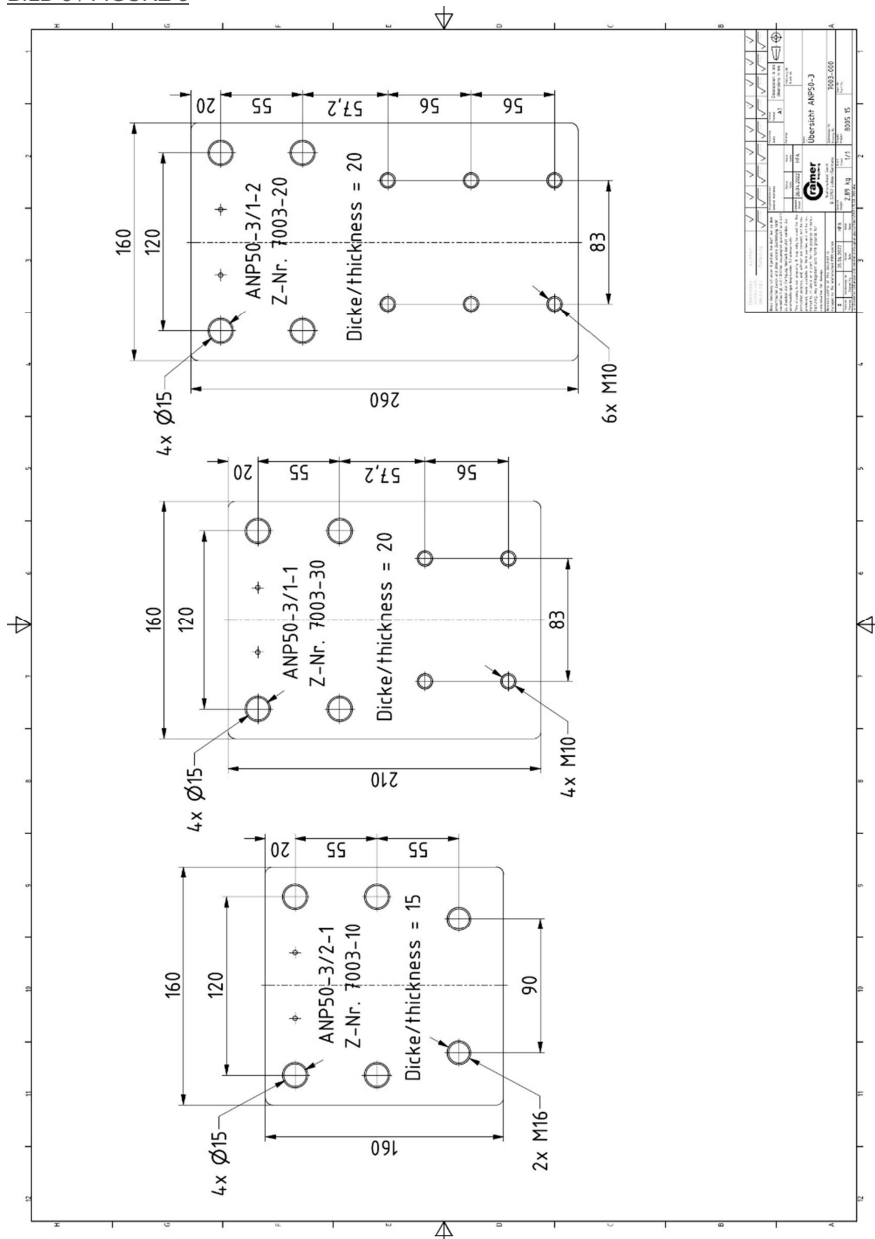
ANP50-4/1-2

BILD 2 / FIGURE 2



Beispiele für Zusammenbauten mit Anschraubplatten  
Examples for assemblies with mounting plates  
Exemples de montages avec plaques vissées

BILD 3 / FIGURE 3



Technical drawing showing three rectangular plates with dimensions and specifications:

- Plate 1 (Top):** ANP50-4/1-1, Z-Nr. 7004-20. Dimensions: 280 x 175. Thickness: 20. Holes: 4x Ø17, 2x M16. Spacing: 140, 90, 155, 80, 20.
- Plate 2 (Middle):** ANP50-4/1-2, Z-Nr. 7004-10. Dimensions: 180 x 175. Thickness: 20. Holes: 4x Ø17, 4x M16. Spacing: 140, 90, 95, 40, 20.
- Plate 3 (Bottom):** ANP50-4/2-1, Z-Nr. 7004-25. Dimensions: 220 x 175. Thickness: 20. Holes: 4x Ø17, 4x M10. Spacing: 140, 83, 47.2, 56, 20.
- Plate 4 (Right):** ANP50-4/2-2, Z-Nr. 7004-23. Dimensions: 280 x 175. Thickness: 20. Holes: 4x Ø17, 6x M10. Spacing: 140, 83, 47.2, 56, 20.

Legend:

Symbol	Description
Ø	Through hole
M	Threaded hole
hatched area	Welded joint

Scale: 1:1

Material: St 37.4

Manufacturer: Ganser

Drawing: 7004-10

Revision: 1.0

Drawn: [Signature]

Checked: [Signature]

Approved: [Signature]

BILD 5 / FIGURE 5

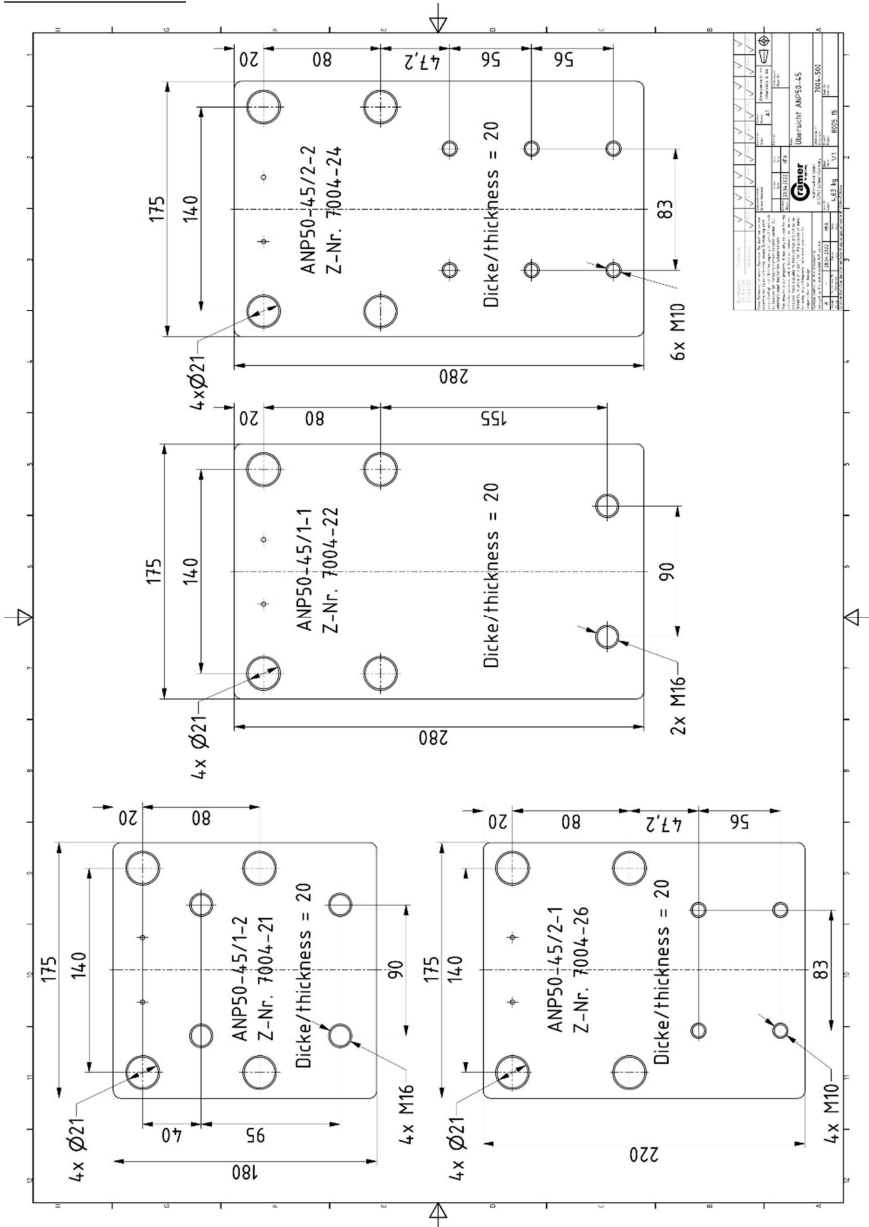
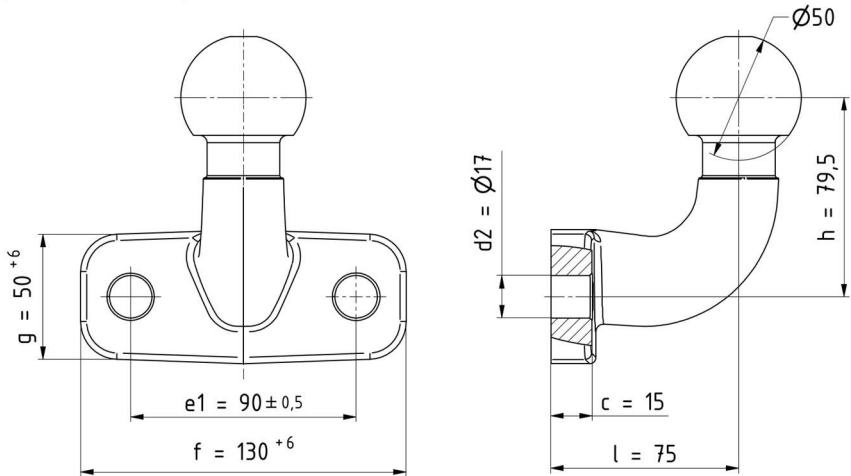


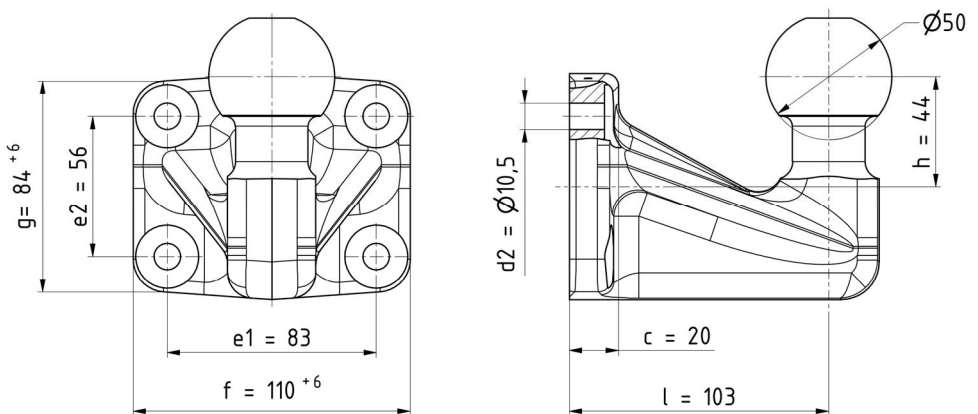


BILD 6 / FIGURE 6



Kugel / ball / boule A50-X

BILD 7 / FIGURE 7



Kugel / ball / boule A50-X