

**MONTAGE- UND BETRIEBSANLEITUNG
INSTALLATION AND OPERATING INSTRUCTIONS
INSTRUCTIONS DE MONTAGE ET D'UTILISATION**

31.03.2022

KUPPLUNGSPLATTE KuPS

COUPLING PLATE (SLIDER) KuPS

PLAQUE D'ATTELAGE KuPS

WICHTIGE HINWEISE:

siehe separates Dokument BA_TASC_400002, www.walterscheid.com/downloads/

IMPORTATANT NOTES:

see separate document BA_TASC_400002, www.walterscheid.com/downloads/

NOTES IMPORTANTES:

voir document séparé BA_TASC_400002, www.walterscheid.com/downloads/

COUPLING PLATE (SLIDER) KuPS

1. TECHNICAL DATA AND DESIGNATIONS:

DESCRIPTION:

(See Figure 1)

Coupling plates are height adjustable sliding plates (sliders), which can be used exclusive in towing frames with guide rails. They are prepared for the attachment of flange couplings or other connecting devices with flange.

OPERATING RANGE:

For use on agricultural or forestry vehicles, self-propelled work machines or trailers.

TRAILER RINGS:

Please consider the operating instructions of the mounted connecting devices.

TYPE APPROVALS AND CHARACTERISTIC VALUES:

APPROVAL UN/ECE R147:

Classification of mechanical coupling device: f

CHARACTERISTIC VALUES:

- > Adm. D-value: 29,0 kN
- > Adm. Dc-value: 29,0 kN
- > Adm. V-value: 25,6 kN
- > Adm. vertical load: 1250 daN (kg)
- > Max. speed: 60 km/h

R147-APPROVAL SIGN



147R-00 0015D



NOTE:

If the valid national approval regulations of the respective country of use require additional official approvals for using these parameters, such approvals must be applied for. For use of the coupling above the PTO, attention should be paid to the vehicle manufacturer's data regarding vertical loads.



IMPORTANT:

Attention must be paid to the D value and the maximum vertical load of the towing frame in this context. The lower value applies in each case.

VERSIONS AND DIMENSIONS:

(See Figure 2)

The coupling plates can be delivered in different dimensions and different mounting holes according to the following tables. They are prepared for the attachment of trailer hitches or comparable connecting devices with different flange dimensions.

Versions	Coupling plate				guide rail of towing frame		
	Width A	Thickness B	Locking Pin \varnothing C	Height Area D	Width	Slot	Hole \varnothing
	[mm]	[mm]	[mm]	[mm]	[mm]	[mm]	[mm]
KuP199A	199	29,0	22	120	200	30,0	23
KuP199B	199	29,7	22	120	200	30,0	23

KuP219	219	29,7	22	120	220	30,0	23
KuP241	241	29,7	22	120	242	30,0	23
KuP244	244	29,7	20	120	245	30,0	21

Table 1

Ahb: Anhängebock

FLANGE:

(See Figure 2)

Flangesize	Hole pattern a x b	hole-Ø c	Mounting screws	Max. Flange dimensions
	[mm]	[mm]		[mm]
1	90 x 0	M16	2 x M16x50	155x90
2	83 x 56	M10	4 x M10x50	155x90
3	106 x 55	M14	4 x M14x50	155x90

Table 2

The flange sizes correspond to the classes A50-1 to A50-3 as defined in directive or ECE R55. The coupling plate can be equipped with two hole patterns.

VERSIONS (= ORDER DESIGNATION):

Versions are always expressed as: **KuP xxxZ-y**, with xxx representing for the total width of the plate, Z the version (A or B) and y the flange size. Two hole patterns are possible on a coupling plate, then the flange size designations are placed one behind the other.

Example: KuP199A-23: coupling plate 199 wide, version A with hole pattern 83x56, hole size M10 as well as hole pattern 106x55, hole size M14.

ADMISSIBLE COUPLING POINT:

(See Figure 3 and 4)

The maximum distance from the center of the guide rail of the coupling plate up to the coupling point of the mounted connecting device amounts to 140 mm. Figure 3 shows exemplarily implemented couplings. If the coupling point distance is more than 140 mm, the coupling plate must be examined if necessary in single approvals (in the area of application of the StVZO) with adapted characteristic values. In that case contact us or your specialist dealer.



IMPORTANT:

To avoid injury, protective gloves, safety glasses and safety shoes must be worn during all dismantling/ assembly actions described in this chapter.

Environment:

Lubricants can enter the environment. Environmental pollution: Collect, store and correctly dispose of lubricants in suitable containers.

2. INSTALLATION:

(See Figure 1)

ATTACHMENT OF THE COUPLING:



NOTE:

The pertinent regulations (e.g. Accident Prevention Regulations for Vehicles) and the attachment guidelines of the vehicle manufacturers must be observed when installing the coupling!

The attachment of the coupling to the vehicle must be carried out in accordance with the requirements of regulation (EU) 2015/208, Appendix 34.



NOTE:

Official national regulations must be observed. For example: in Germany the obligations §13 FZV regarding the data in the car license concerning the permissible trailer weight as well as the permissible vertical load must be considered.

2.1 INSTALLATION OF COUPLING PLATE INTO THE TOWING FRAME:

- > Hold the coupling plate by the handle and insert it from above into the guide rails of the the towing frame.
- > Press the handle (3) in the direction of travel and push it to the right. This pushes the locking pins (2) into the coupling plate (1).
- > Push the handle (3) all the way to the left in the desired position and thus fix the coupling plate (1) on both sides using the locking pins (2) in the locking holes of the towing frame.
- > Make sure that the right flap of the linkage is to the left of the roll pin. This will secure the locking pins (2).
- > The guide of the slider may not project beyond the guide slots of the frame.



WARNING:

After each initial assembly or height adjustment, make sure that the locking pins are engaged in the holes of the guide rails and the linkage is secured. Only then is there a proper locking! The coupling may only be operated in locked condition.

2.2 INSTALLATION OF FLANGE COUPLINGS ONTO THE COUPLING PLATE:

Flange couplings are bolted onto the coupling plate by means of 2 or 4 screws ISO 4014 or ISO 4762. A torque wrench must be used to obtain the correct tightening torque.

- > Flange couplings with hole patterns in accordance with flange size -1 are bolted onto the coupling plate by means of 2 screws M16.
- > Flange couplings with hole patterns in accordance with flange size -2 are bolted onto the coupling plate by means of 4 screws M10.
- > Flange couplings with hole patterns in accordance with flange size -3 are bolted onto the coupling plate by means of 4 screws M14.
- > In use of Walterscheid flange couplings:
 - For flanges -1 use 2 bolts M16x35 – 10.9
 - For flanges -2 use 4 bolts M10x35 – 10.9.
 - For flanges -3 use 4 bolts M14x35 – 10.9.

Normally the bolts are not included in the scope of supply. Therefore the data of the manufacturer of the mounted coupling are to be preferred for attachment.

If there are no specifications see separate document BA_TASC_400038, www.walterscheid.com/downloads/

For flange couplings of other manufactures it is to be guaranteed that the minimum grip of the used screws corresponds to 1.2 x nominal diameters. If necessary, the screw length is to be adapted.

3. OPERATION:

(See Fig. 1)



WARNING:

The pertinent safety regulations must be observed when coupling and uncoupling. No one may stand between the vehicles. The coupling may only be operated in locked condition.

When coupling and uncoupling, the drawbar must be as horizontal as possible relative to the coupling.

HEIGHT ADJUSTMENT (SEE ALSO INSTALLATION) OF THE COUPLING PLATE IN THE TOWING FRAME:

See point 2.1



WARNING:

After each height adjustment, make sure that the locking pins (2) are engaged in the holes of the guide rails and the latch pins (3) in the outer positions in the coupling plate (1). Only then is there a proper locking! The coupling may only be operated in locked condition.

4. MAINTENANCE

CARE

- > Any dirt and corrosion must always be cleaned off the coupling in order to guarantee correct operation. All moving parts of the coupling must be lubricated regularly (depending on the length of use) and checked for easy movement.
- > If possible, avoid cleaning with a pressure washer. If this is unavoidable, re-grease the coupling.
- > In the event of repairs (e. g. replacement of the locking pin), lubricate the new parts with fresh grease. For lubrication use a water-resistant, multi-purpose grease (Grease type: lithium saponified, consistency class: NL-GI2).



IMPORTANT:

Use only original Walterscheid spares when replacing parts. If the vehicle owner does not have the appropriate skilled workers and the necessary technical equipment, the replacement may only be performed by a specialist workshop.



WARNING:

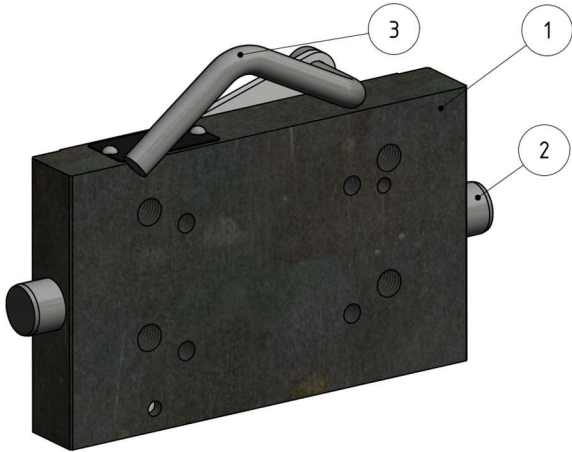
SAFETY NOTES:

- > The user is obliged to always operate the coupling in perfect condition and to forbid its use by unauthorised persons.
- > The loads indicated on the type plate may not be exceeded.
- > Unauthorised conversion or modification of the coupling is not permitted.

5. CALCULATION OF CHARACTERISTIC VALUES FOR CORRECT OPERATION OF THE COUPLING PLATE ON AGRICULTURAL AND FORESTRY VEHICLES

See attachment or separate document BA_TASC_400029, www.walterscheid.com/downloads

BILD 1
FIGURE 1



KuP 199A-23

Legende:

- 1..... Kupplungsplatte
- 2..... Rastbolzen
- 3..... Handgriff

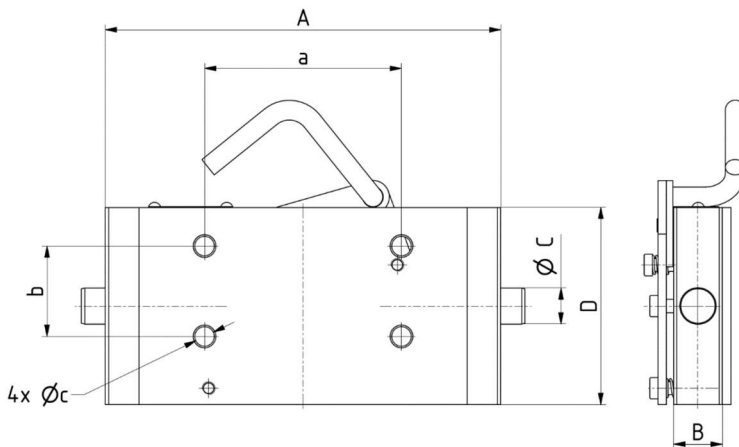
Legend:

- 1 coupling plate
- 2 locking pins
- 3 handle

Légende:

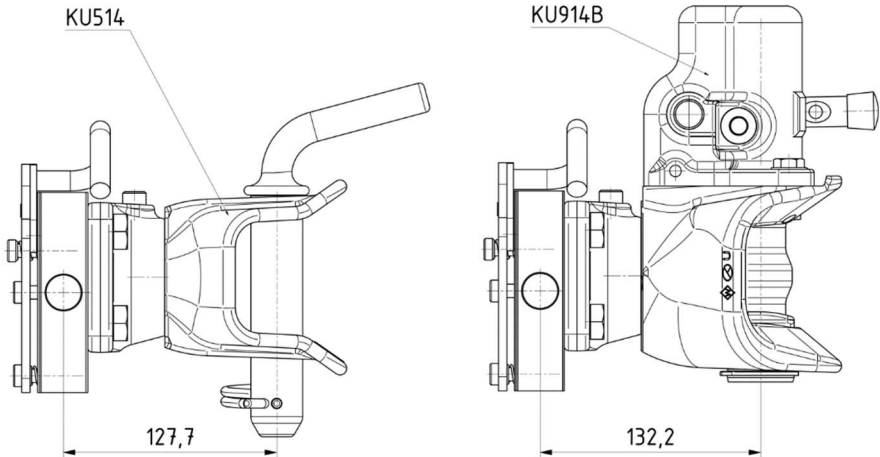
- 1 plaque d'attelage
- 2 boulons de verrouillage
- 3 poignée

BILD 2
FIGURE 2



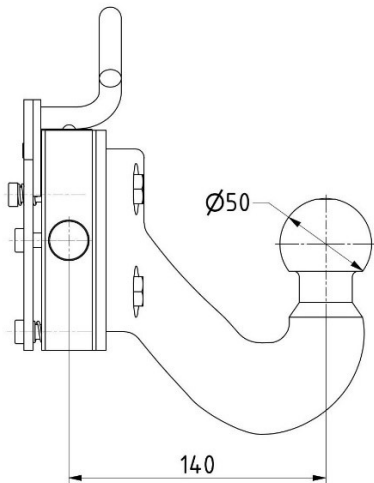
Maße / dimensions

BILD 3
FIGURE 3



Zulässige Stützabstände / admissible coupling point/ Espacement admissible des supports

BILD 4
FIGURE 4



Zulässige Stützabstände / admissible coupling point/ Espacement admissible des supports