

**MONTAGE- UND BETRIEBSANLEITUNG
INSTALLATION AND OPERATING INSTRUCTIONS
INSTRUCTIONS DE MONTAGE ET D'UTILISATION**

01.12.2021

NICHTSELBSTTÄTIGE ANHÄNGEKUPPLUNG KU 5141

NON AUTOMATIC TRAILER COUPLING KU 5141

ATTELAGE DE REMORQUE NON AUTOMATIQUE KU 5141

WICHTIGE HINWEISE:

siehe separates Dokument BA_TASC_400002, www.walterscheid.com/downloads/

IMPORTATANT NOTES:

see separate document BA_TASC_400002, www.walterscheid.com/downloads/

NOTES IMPORTANTES:

voir document séparé BA_TASC_400002, www.walterscheid.com/downloads/

NON AUTOMATIC TRAILER COUPLING KU 5141

1. TECHNICAL DATA AND DESIGNATIONS:

DESCRIPTION:

(see figure 1)

The coupling is a non-automatic trailer coupling, its clevis dimensions and field of application complying with DIN 11028 as well RREG 2009/144/EC, VO (EU) 2015/208 and regulation UN ECE R147, class c40.

In its normal state, the coupling is in closed and locked position.

The trailer coupling can be pivoted through 360°, the torque required for this purpose being 100 - 150 Nm.

The trailer coupling is only offered installed in a height-adjustable slider and can only be operated in quickly height-adjustable towing frames.

OPERATING RANGE:

For use on agricultural or forestry vehicles, self-propelled work machines or trailers.

TYPE APPROVALS AND CHARACTERISTIC VALUES:

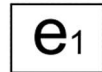
1. EU-TYPE APPROVAL:

Mechanical coupling type according to VO(EU)2015/208: non-automatic trailer coupling

CHARACTERISTIC VALUES:

- > Adm. D-value: 43,0 kN
- > Adm. vertical load: 1250 daN (kg)

EU type approval sign:



00589ND

2. EC APPROVAL NO.:

e1*89/173*2000/1*0035

CHARACTERISTIC VALUES:

- > Adm. D-value: 45,0 kN
- > Adm. vertical load: 1250 daN (kg)



NOTE:

If the valid national approval regulations of the respective country of use require additional official approvals for using these parameters, such approvals must be applied for.

For use of the coupling above the PTO, attention should be paid to the vehicle manufacturer's data regarding vertical loads.



IMPORTANT:

Attention must be paid to the D value and the maximum vertical load of the towing frame in this context. The lower value applies in each case.

SLIDERS

(see figure 2)

The trailer coupling will be mounted in different total slider widths:

Approval no.	Width Dim. A	Guide Dim. B	Pin-Ø-Dim. C	Guide spacing in towing frame	Guide width in towing frame	Hole -Ø in towing frame
see above	[mm]	[mm]	[mm]	[mm]	[mm]	[mm]

1,2	190	29	22	192	30	23
1,2	199	29	22	200	30	23
1	199	29,7	22	200	30	23
1	239	29,7	22	240	30	23

Table 1

VERSIONS (= ORDER DESIGNATION):

The couplings are available in versions NB (normal pin), ZB (draw pin) and STB (socket pin). Designations are always expressed as: **IN5141/xxxYYY**, with xxx representing the total width and YYY the version.

The slider width 199 can also be supplied with guidance width of 29,7 mm. In this case the letter "A" will be added behind the total width of the designation.

Example:

IN5141/199ASTB

IN5141 = non automatic coupling of the KU5141 series

199 = total width of the slider

A = Guide 29,7 mm

STB = Socket pin

TRAILER RINGS:

All versions are suitable for connection to trailer rings according to ISO 5692-1, ISO 8755, ISO 1102 and ISO 5692-2.



IMPORTANT:

To avoid injury, protective gloves, safety glasses and safety shoes must be worn during all dismantling/ assembly actions described in this chapter.

Environment:

Lubricants can enter the environment. Environmental pollution: Collect, store and correctly dispose of lubricants in suitable containers.

2. INSTALLATION:



NOTE:

The pertinent regulations (e.g. Accident Prevention Regulations for Vehicles) and the attachment guidelines of the vehicle manufacturers must be observed when installing the coupling!

The attachment of the coupling to the vehicle must be carried out in accordance with the requirements of regulation (EU) 2015/208, Appendix 34.



NOTE:

Official national regulations must be observed. For example: in Germany the obligations §13 FZV regarding the data in the car license concerning the permissible trailer weight as well as the permissible vertical load must be considered.

ATTACHMENT OF THE COUPLING INTO THE TOWING FRAME:

- > Push slider from above into the slots of the guide rails of the coupling frame.
- > Shift locking pins (4) right and left into the slider by moving the handle (3) in drive direction and to the right.
- > Move to the preferred height position, release handle (3) and engage automatically into the appropriate holes of the coupling frame.
- > In general, it is to be checked after each adjustment of the slider whether the locking pins are properly engaged in the holes of the guide rails. Only then the correct locking state is given.
- > The guide of the slider (120 mm long) must not project beyond the guide slots of the frame, both above and down.

**WARNING:**

The pertinent safety regulations must be observed when coupling and uncoupling. No one may stand between the vehicles. The coupling may only be operated in locked condition.

3. DESCRIPTION, OPERATION AND MAINTENANCE:

See attachment or separate document BA_TASC_400026, www.walterscheid.com/downloads/

**WARNING:****SAFETY NOTES:**

- > The user is obliged to always operate the coupling in perfect condition and to forbid its use by unauthorised persons.
- > The loads indicated on the type plate may not be exceeded.
- > Unauthorised conversion or modification of the coupling is not permitted.

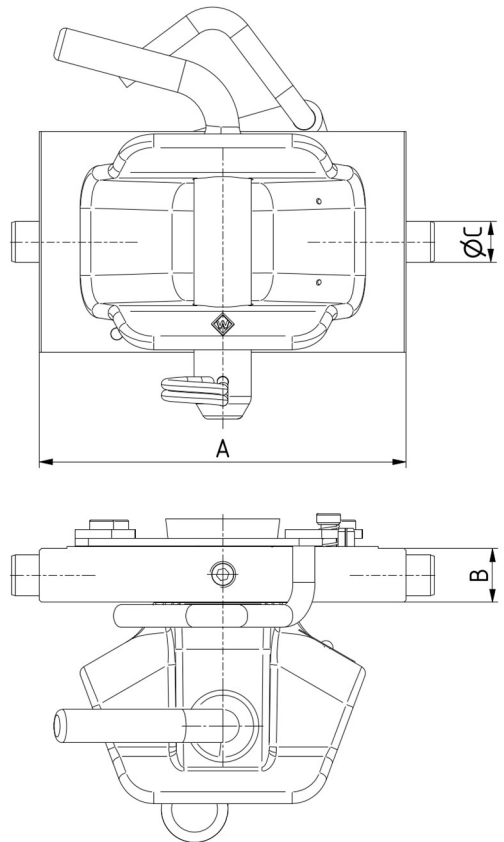
4. CALCULATION OF CHARACTERISTIC VALUES FOR CORRECT OPERATION OF THE COUPLING ON AGRICULTURAL AND FORESTRY VEHICLES

See attachment or separate document BA_TASC_400029, www.walterscheid.com/downloads

BILD 1
FIGURE 1



BILD 2
FIGURE 2



Typ / type: IN 5141/199STB

Abmessungen / dimensions