

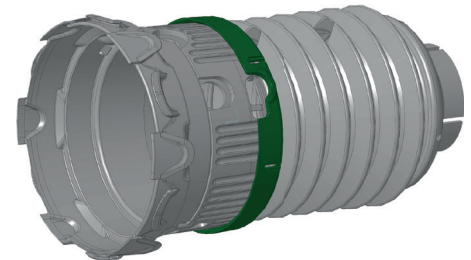
## Wide Angle Full Guard

Fully enclosed drive shaft guarding on the implement side

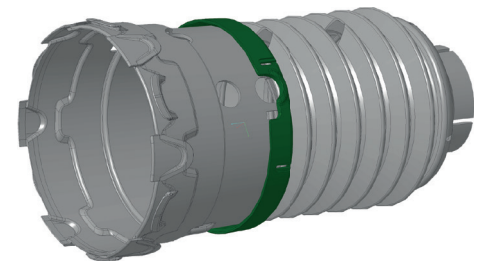
The fully enclosed drive shaft guard on the implement side is based on the proven Walterscheid-Drive Shaft Protection-Kit with SD / PG Guard. The kit supplements the range of available guards with full protection for all possible joint angles. Even with a joint angle of up to 90° at standstill, a fully enclosed guard is maintained. In addition to fulfilling safety requirements, the complete drive shaft guard on the implement side functions as a protective cover against dust and dirt. Due to the direct mounting of the drive shaft guard on the implement, no retaining chains are required.

The new Wide Angle Drive Shaft Protection Guard is distinguished by:

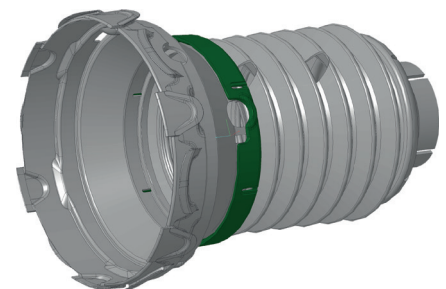
- > Wide angle cone and ribbed tube are connected via an adapter
- > Only one retaining chain required with the SD guard.
- > Retaining chains are not required when using with the PG or new ST guard.
- > Easy mounting and user-friendly solution
- > Existing parts only need to be shortened
- > Maximum protection against rotating joints



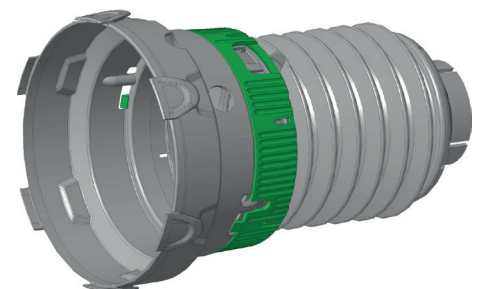
Size 2280 SDF15



Size 2380 SDF15



Size 2380 SDF25



Size 2480 SDF25