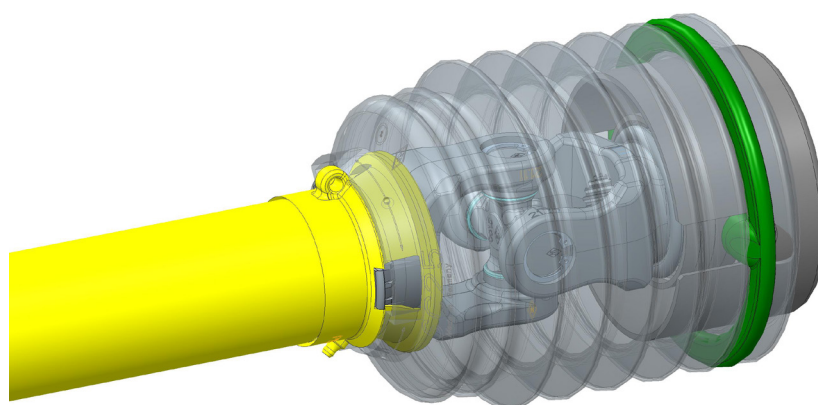


## Anti-twist protection (new full guard ring)

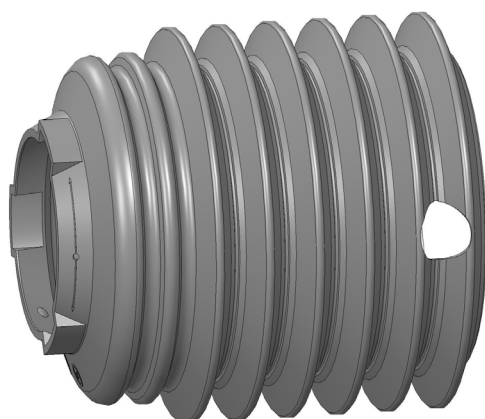
for the connection of driveshaft guard to gearbox

Walterscheid is developing new anti-twist protection for connecting the driveshaft guard and the gearbox. Quick, simple and reliable connection of shaft guard and protective cap through the full guard ring.



- > No need for a safety chain on the driveshaft guard
- > Full guard offers a high degree of protection from rotating parts
- > Space-saving solution
- > Simple assembly/dismantling
- > Axial displacement (longitudinal axis) and tilting movements are permitted
- > Solid without screws or similar fastening devices

Shaft guard



Full guard ring



Protective cap  
(for gearbox connection)

