

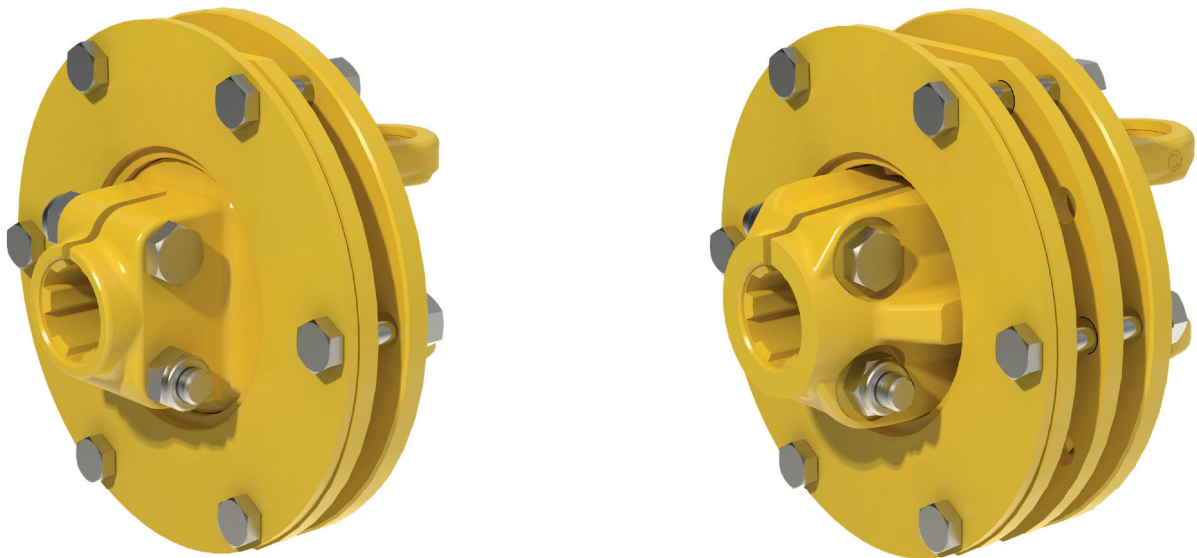
FRICITION CLUTCH K90TF

K90/4TF

FK90TF

FK90/4TF

MODIFICATIONS OF INDIVIDUAL COMPONENTS



Due to design changes and adaptations/standardizations, the friction and overrunning friction clutches of the TF series have been revised. Since some components and also the torques of the clutches have changed, the clutches are given new part numbers. On the following pages the changes from **old** to **new** clutches are listed. This makes it possible to identify the corresponding clutches.

PRODUCT INFORMATION

FRICITION CLUTCH K90TF

Modifications of individual components

Clutch Part No.		Clutch yokel		hub		tube		Belleville spring		torque	
OLD	NEW	OLD	NEW	OLD	NEW	OLD	NEW	OLD	NEW	OLD	NEW
		Ø d = 81,0 mm	Ø d = 84,3 mm	Ø D = 80,6 mm	Ø D = 83,9 mm	604026 L = 24,3 mm 604028 L = 24,8 mm				[Nm]	[Nm]
56.101.36	56.100.38	21.73.101	21.73.102	56.90.04	56.97.01	16.50.757	16.50.757				
604887	605578	609029	159887	338221	604498	604028	604028	603914 / 66.12.14		900	900
604862	605578	609029	159887	338221	604498	604028	604028	603914 / 66.12.14		1000	900
604847	605577	609029	159887	338221	604498	604028	604028	603913 / 66.12.13		800	750
604861	604514	609029	159887	338221	604498	604026	604026	603912 / 66.12.12		650	600
56.103.36	56.101.36	35.73.105	35.73.106	56.60.04	56.97.01	16.50.757	16.50.757	66.12.14	66.12.14		
605402	605581	159684	159982	338221	604498	604028	604028	603914 / 66.12.14		1000	900

FRICITION CLUTCH K90/4TF

Modifications of individual components

Clutch Part No.		Clutch yokel		hub		tube		Belleville spring		torque	
OLD	NEW	OLD	NEW	OLD	NEW	OLD	NEW	OLD	NEW	OLD	NEW
		$\varnothing d = 81,0 \text{ mm}$	$\varnothing d = 84,3 \text{ mm}$	$\varnothing D = 80,6 \text{ mm}$	$\varnothing D = 83,9 \text{ mm}$	604036 L= 44,3 mm 604038 L= 44,8 mm 604040 L= 45,3 mm				[Nm]	[Nm]
56.100.37	56.100.39	35.73.105	35.73.106	56.91.00	56.98.01						
159682	604515	159684	159982	320497	604506	604036	604036	603911 / 66.12.11			
602187	604516	159684	159982	320497	604506	604036	604036	603912 / 66.12.12		1200	1100
603238	604516	159684	159982	320497	604506	604036	604036	603912 / 66.12.12		1350	1350
604446	604518	159684	159982	320497	604506	604038	604038	603913 / 66.12.13		1500	1350
604447	604518	159684	159982	320497	604506	604038	604038	603913 / 66.12.13		1650	1650
16501800											
56.101.37	56.101.39	36.73.104	36.73.105	56.91.04	56.98.03						
602281	604523	602285	604527	328444	604510	604038	604038	603913 / 66.12.13		1650	1650
603881	604522	602285	604527	328444	604510	604036	604036	603912 / 66.12.12		1500	1350
604865	605584	602285	604527	328444	604510	604038	604038	603914 / 66.12.14		2100	2100
16501800											
56.102.37	56.102.39	36.73.104	36.73.105	56.91.06	56.98.04						
602282	604525	602285	604527	338233	604512	604038	604038	603913 / 66.12.13		1650	1650
604740	604525	602285	604527	338233	604512	604038	604038	603913 / 66.12.13		1800	1650
605190	605576	602285	604527	338233	604512	604036	604036	603912 / 66.12.12		1500	1350
16501800											
56.103.37	56.103.39	21.73.101	21.73.102	56.91.00	56.98.01						
603303	604520	609029	159887	320497	604506	604036	604036	603911 / 66.12.11		1200	1100
605208	605585	609029	159887	320497	604506	604036	604036	603912 / 66.12.12		1350	1350

PRODUCT INFORMATION

FRICITION CLUTCH K90/4TF

Modifications of individual components

Clutch Part No.		Clutch yokel		hub		tube		Belleville spring		torque	
OLD	NEW	OLD	NEW	OLD	NEW	OLD	NEW	OLD	NEW	OLD	NEW
		Ø d = 81,0 mm	Ø d = 84,3 mm	Ø D = 80,6 mm	Ø D = 83,9 mm	604036 L= 44,3 mm 604038 L= 44,8 mm 604040 L= 45,3 mm				[Nm]	[Nm]
56.104.37	56.104.39	35.105.105	35.73.106	56.91.06	56.98.04						
603868	605591	159684	159982	338233	604512	604038	604038	603913 / 66.12.13		1650	1650
604733	604526	159684	159982	338233	604512	604036	604036	603911 / 66.12.11		1200	1100
605407	605590	159684	159982	338233	604512	604036	604036	603912 / 66.12.12		1350	1350
56.105.37	56.105.39	16.54.223	16.54.225	56.91.00	56.98.01						
604092	604521	604093	604497	320497	604506	604038	604038	603913 / 66.12.13		1650	1650
56.106.37	56.106.39	35.73.105	35.73.106	56.91.04	56.98.03						
604260	604524	159684	159982	328444	604510	604036	604036	603912 / 66.12.12		1500	1350
56.107.37	56.107.39	26.73.101+	26.73.102+	56.91.06	56.98.04						
605023	607031	605024	605560	338233	604512	604038	604040	603914 66.12.14	603915 66.12.15	2400	2500
605329	605561	605024	605560	338233	604512	604038	604038	603914 / 66.12.14		2100	2100
56.108.37	56.108.39	36.73.104	36.73.105	56.91.00	56.98.01						
605066	605593	602285	604527	320497	604506	604038	604038	603913 / 6.12.13		1800	1650
605088	605592	602285	604527	320497	604506	604036	604038	603912 / 66.12.12		1500	1350

FRICITION CLUTCH FK90TF

Modifications of individual components

Clutch Part No.		hub		disc		tube		Belleville spring		torque	
OLD	NEW	OLD	NEW	OLD	NEW	OLD	NEW	OLD	NEW	OLD	NEW
		B = 5mm	B = 8 mm	B = 7 mm	B = 7 mm	604026 L = 24,3 mm 604028 L = 24,8 mm				[Nm]	[Nm]
58.100.42	58.102.38	58.60.122	58.60.152	56.93.05	56.93.05	16.50.757	16.50.757	66.12.13	66.12.12		
609132	605669	609408	605670	135750	135750	604028	604026	603913	603912	750	750
58.101.42	58.101.38	58.60.122	58.60.152	56.93.05	56.93.05	16.50.757	16.50.757	66.12.13	66.12.12		
609133	605664	609408	605670	135750	135750	604028	604026	603913	603912	750	750

PRODUCT INFORMATION

FRICITION CLUTCH FK90/4TF

Modifications of individual components

Clutch Part No.		hub		disc		tube		Belleville spring		torque	
OLD	NEW	OLD	NEW	OLD	NEW	OLD	NEW	OLD	NEW	OLD	NEW
		B= 5mm	B= 8 mm	B= 6 mm	B= 7 mm	605811 L= 40,3 mm 605813 L= 40,8 mm 604036 L= 44,3 mm 604038 L= 44,8 mm				[Nm]	[Nm]
58.100.43	58.100.39	58.60.117	58.60.150	56.34.07	56.34.08						
603478	605659	600255	605524	600257	605127	605811	604036	603911 / 66.12.11		1200	1100
58.101.43	58.101.39	58.60.117	58.60.150	56.34.07	56.34.08						
609303	605649	600255	605524	600257	605127	605811	604036	603912 / 66.12.12		1500	1350
58.102.43	58.102.39	58.60.118	58.60.151	56.34.07	56.34.08			66.12.12	66.12.13		
609302	605650	600256	605651	600257	605127	605811	604038	603912	603913	1500	1650
58.103.43	58.103.39	58.60.117	58.60.150	56.34.07	56.34.08						
609104	605702	600255	605524	600257	605127	605811	604036	603911 / 66.12.11		1200	1100
58.104.43	58.104.39	58.60.117	58.60.150	56.34.07	56.34.08						
609105	605675	600255	605524	600257	605127	605811	604036	603911 / 66.12.11		1200	1100
58.105.43	58.105.39	58.60.117	58.60.150	56.34.07	56.34.08						
159980	605678	600255	605524	600257	605127	605811	604036	603912 / 66.12.12		1500	1350
603634	605677	600255	605524	600257	605127	605811	604036	603911 / 66.12.11		1200	1100
603885	606599	600255	605524	600257	605127	605813	604038	603913 / 66.12.13		1800	1650
604593	605678	600255	605524	600257	605127	605813	604036	603912 / 66.12.12		1350	1350
58.106.43	58.106.39	58.60.118	58.60.151	56.34.07	56.34.08						
159979	605687	600256	605651	600257	605127	605811	604036	603912 / 66.12.12		1500	1350
603729	605686	600256	605651	600257	605127	605811	604036	603911 / 66.12.11		1200	1100
603884	606600	600256	605651	600257	605127	605813	604038	603913 / 66.12.13		1800	1650



COMER INDUSTRIES CORPORATION

Walterscheid GmbH | Hauptstraße 150 | D-53797 Lohmar

Tel.: +49 2246 12-0 | Fax: +49 2246 12-3501

www.walterscheid.com