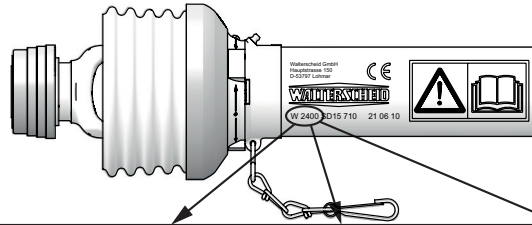


PRODUCT INFORMATION

PTO PI2201.5_GB

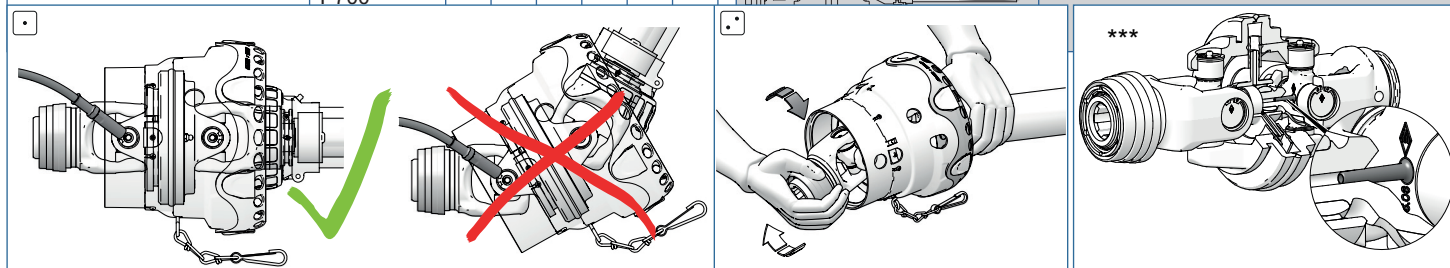
LUBRICATION INTERVALS PTO DRIVE SHAFTS



		P-Line			W-Line			ECO-Line										
		P			PWE/PWZ			W			WWE/WWZ			E				
		1	2	3	1	2	3	1	2	3	1	2	3					
W1 		250 h			60 h			100 h	100 h			8 h	60 h			8 h		
								250 h**				50 h***						
W2 		250 h			40 h			50 h			8 h	40 h			8 h			
		100 h*																

		a	b	c	d	e	f
		[g]	[g]	[g]	[g]	[g]	[g]
W 2100-2700 	W2100						
	W100E	5				5	15
	W2200	5				5	15
	W200E						
	W2300						
	W300E	5				5	15
P 300-800 	P300						
	W2400						
	W400E	10				5	15
	P400						
	W2500	30				5	15
	P500						
	W2600	30				5	15
	P600						
	W2700	30				5	15
	P700						

		a	b	c	d	e	f
		[g]	[g]	[g]	[g]	[g]	[g]
PW450 	WW2280	5	5	20	5	5	15
	WW2280 ***	5	5	15	10	5	15
	WW2380	5	5	20	5	5	15
PW480 / PW580 	WW2380 ***	5	5	15	10	5	15
	PW450		5			5	15
	WW2480	10	5	25	10	5	15
	WW2480 ***	10	5	20	15	5	15
	PW480 ***	10	5		35	5	15
	WW2580	20	5	30	20	5	15
	WW2580 ***	20	5	25	25	5	15
	PW580 ***	20	5		50	5	15
	PW675 ***	20	5	30	20	5	15
WW2280-2580 / PW675 							



- W1 stands for less maintenance intensive operations (e.g. corn harvesting, grain harvesting, farm machinery, crop protection, green fodder harvesting...).
- W2 includes maintenance-intensive operations, such as potato harvesting, soil cultivation, tillage, beet harvesting, slurry and manure spreading and digging techniques.
- * extreme dust and large deflection angle
- ** with P-seal (tyrquoise)
- *** wide angle joints with central lubrication hose